

File: See Legend

1.8M .8 f/d Ku-Band Antenna System

Frequency : 10.950 GHz

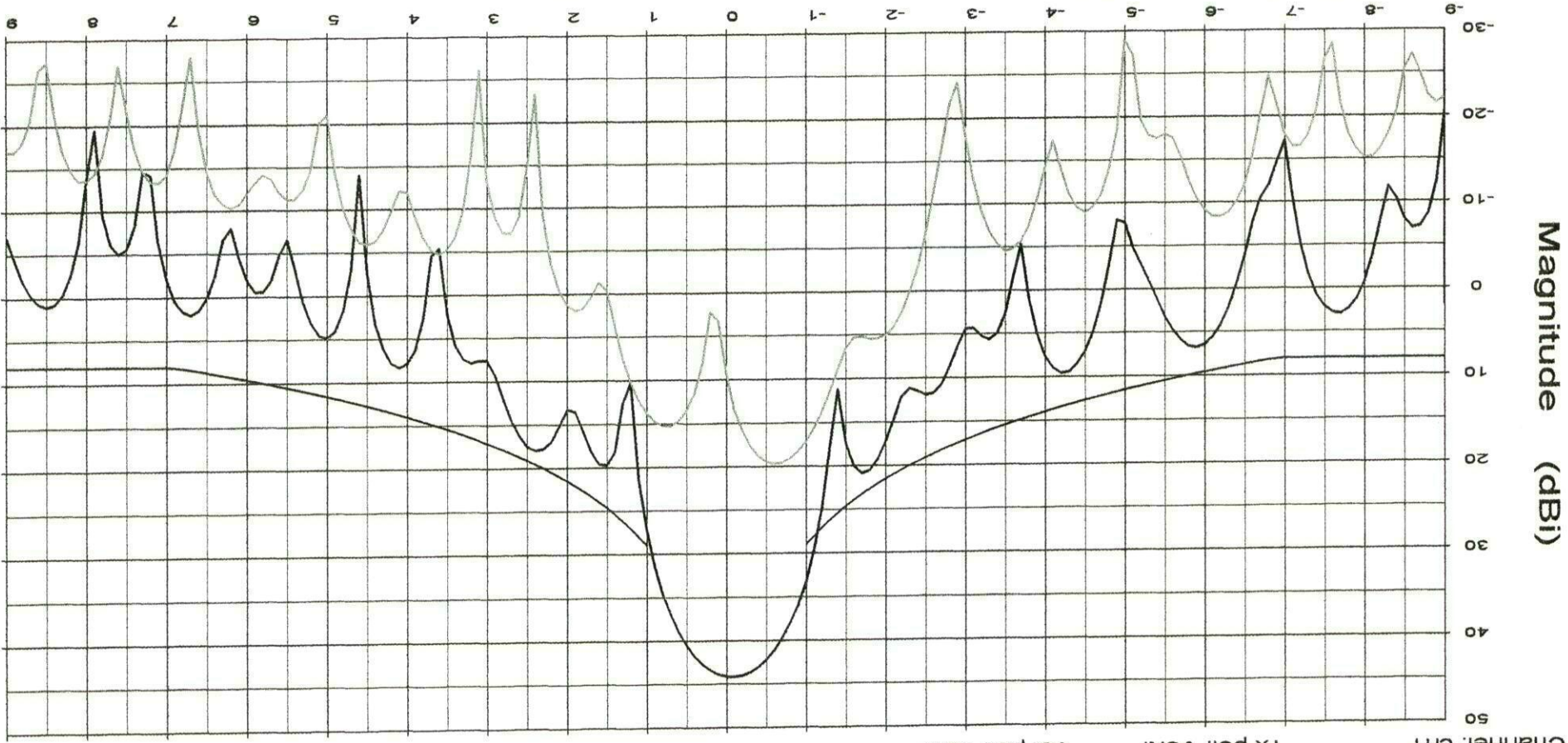
Operator: Ken Poovey

Ser. No.

Channel: ch1

Tx pol: Vert.

Rx pol: Vert.



Sidelobe Envelope: 29-25Log(Theta)~1.0 to 7 Deg
+8 dBi~7 to 9.2 Deg | 32-25Log(Theta)~9.2 to 48 Deg
-10 dBi~48 to 180 Deg

Overlays
071506.DAT-ant_under_test ——— Cal. file
071512.DAT ——— DBI
DBI units
Beam Peak
44.17 Deg
19.63 DBI

File: See Legend

1.8M .8 f/d Ku-Band Antenna System

Frequency : 11.950 GHz

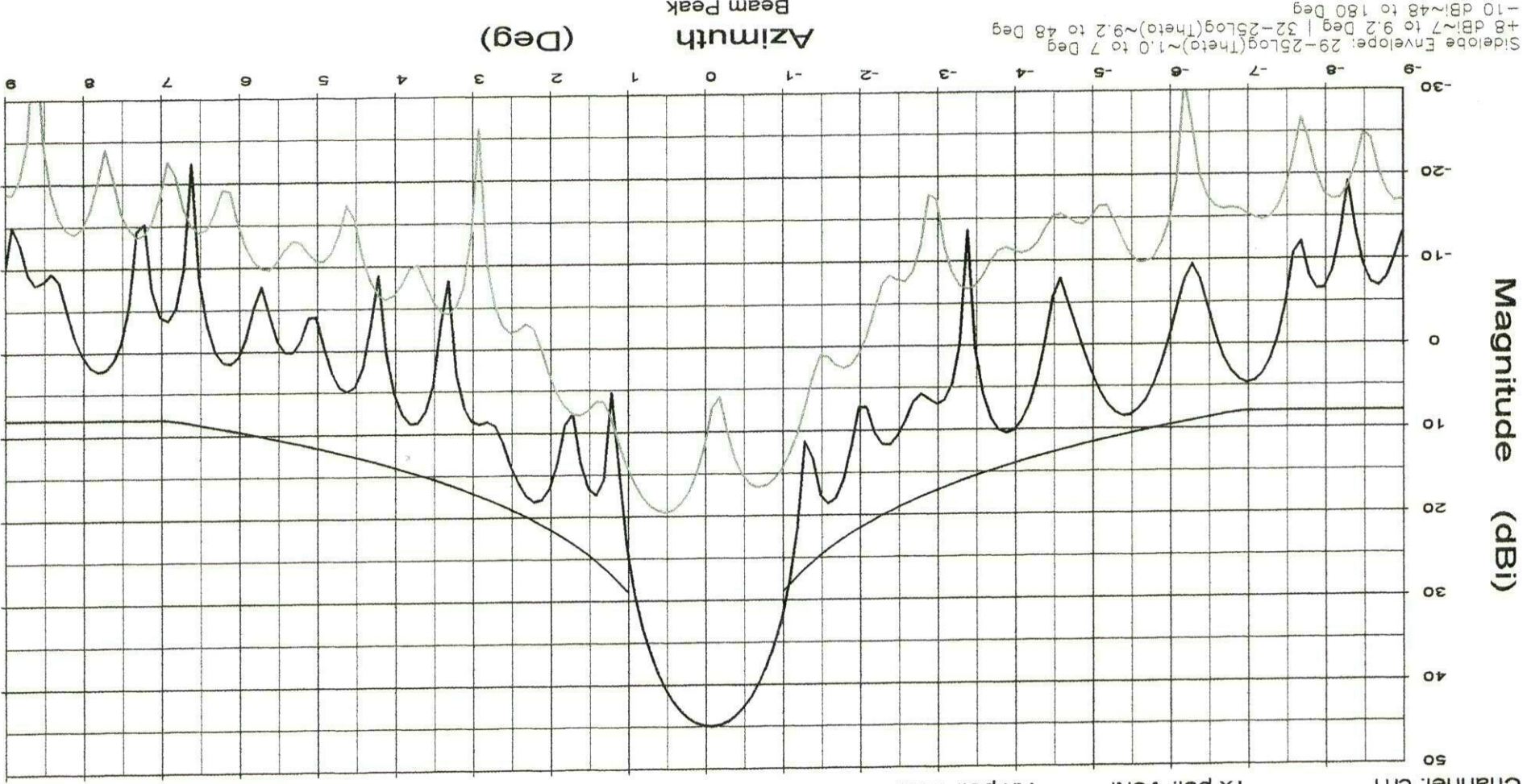
Operator: Ken Poovey

Ser. No.

Channel: ch1

Tx pol: Vert.

Rx pol: Vert.



File: See Legend

1.8M .8 f/d Ku-Band Antenna System

Frequency : 12.200 GHz

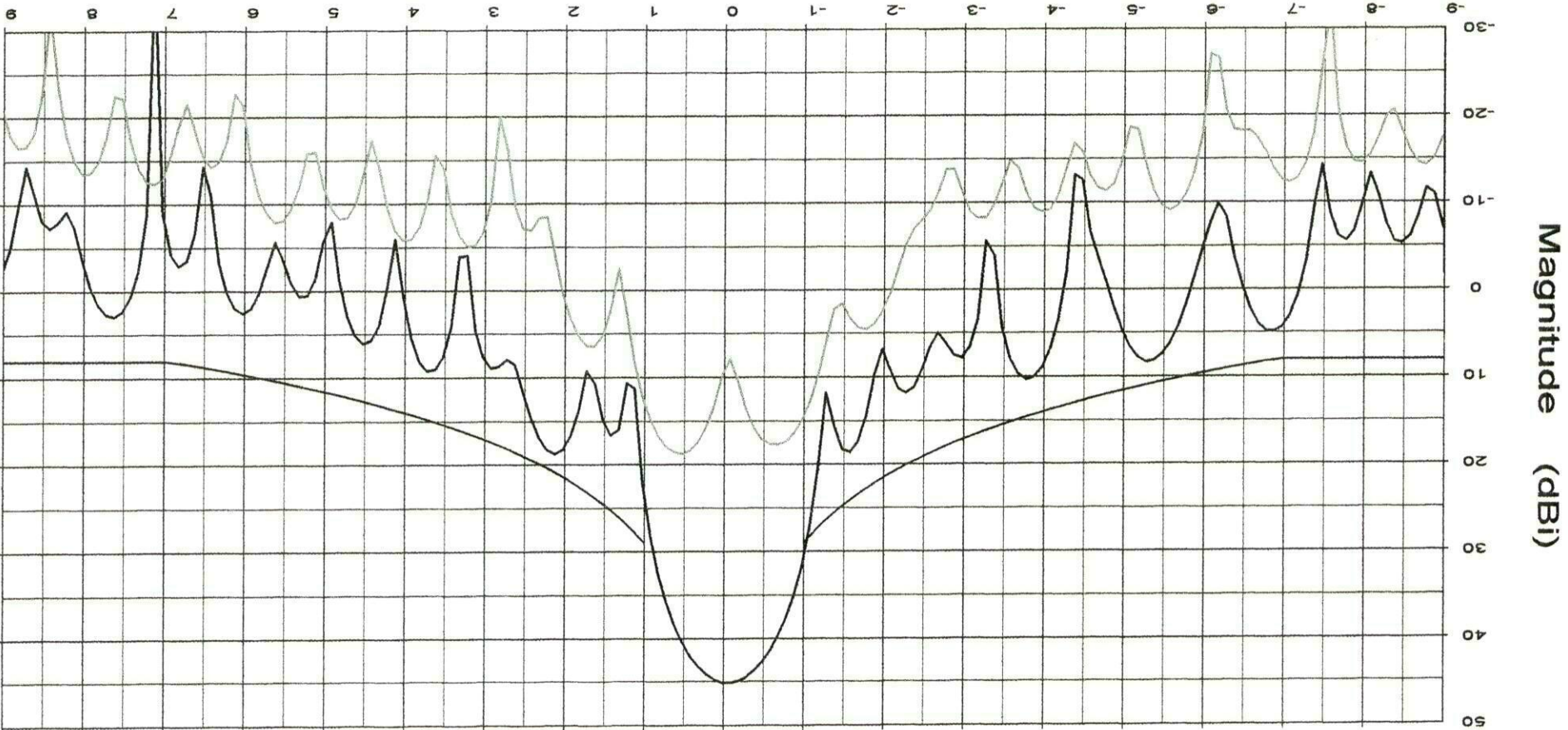
Operator: Ken Poovey

Ser. No.

Channel: ch1

Tx pol: Vert.

Rx pol: Vert.



Sidlobe Envelope: 29-25Log(Theta)~1.0 to 7 Deg
+8 dBi~7 to 9.2 Deg | 32-25Log(Theta)~9.2 to 48 Deg
-10 dBi~48 to 180 Deg

Overlays
Cal. file
071506.DAT units
071512.DAT DBI
071506.DAT DBI
071512.DAT DBI

Beam Peak
Deg 0.55
dB -0.06
45.11
18.72

File: See Legend

1.8M .8 f/d Ku-Band Antenna System

Frequency : 14.000 GHz

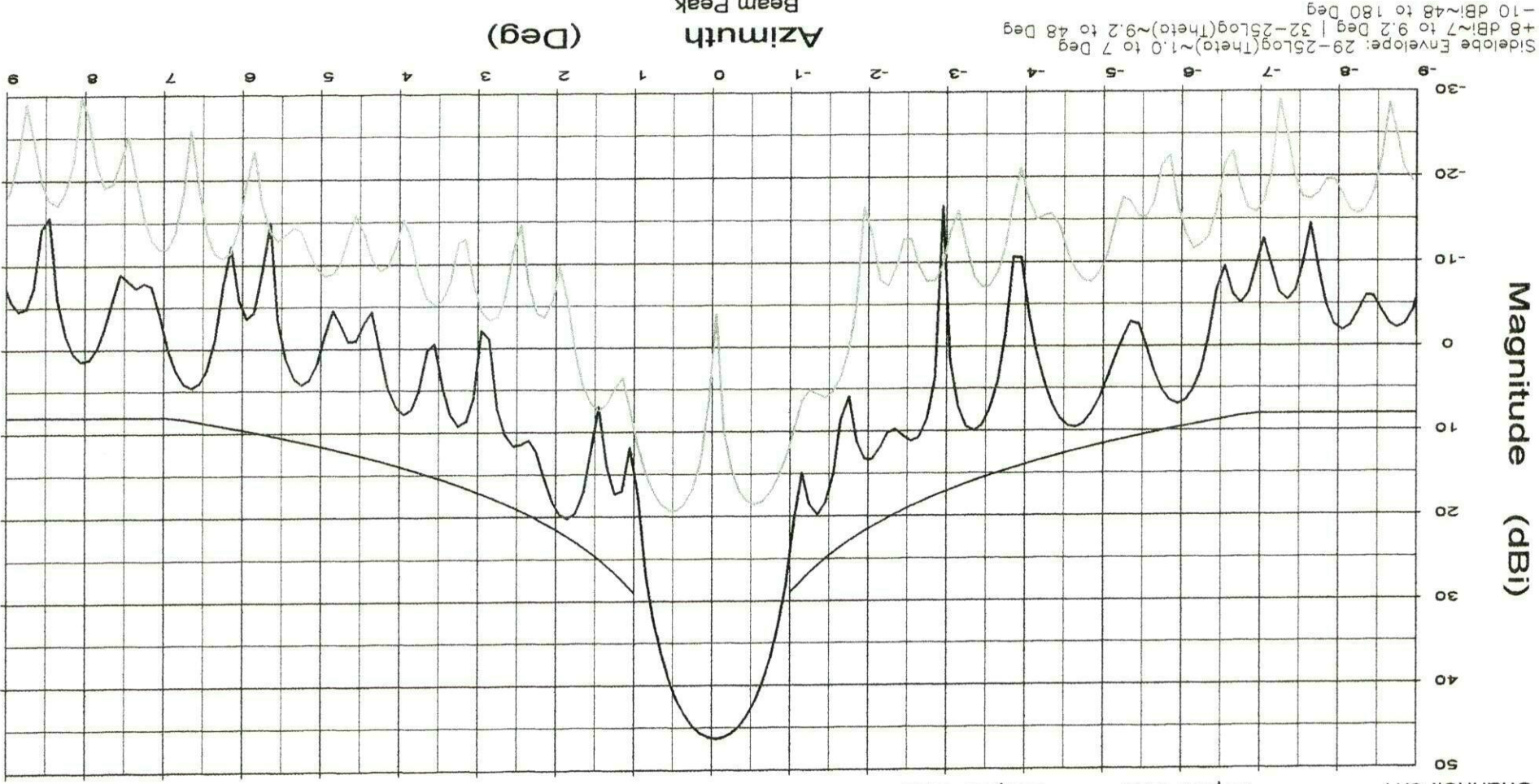
Operator: Ken Poovey

Ser. No.

Channel: ch1

Tx pol: Vert.

Rx pol: Vert.



Sidlobe Envelope: 29-25log(Theta)~1.0 to 7 Deg
+8 dBi~7 to 9.2 Deg | 32-25log(Theta)~9.2 to 48 Deg
-10 dBi~48 to 180 Deg

Overlays
071506.DAT-ant_under_test —
071512.DAT-ant_under_test —

Cal. file	units	Deg	dB
071506.DAT	dBi	-0.06	46.30
071512.DAT	dBi	0.51	19.28

File: See Legend

1.8M .8 f/d Ku-Band Antenna System

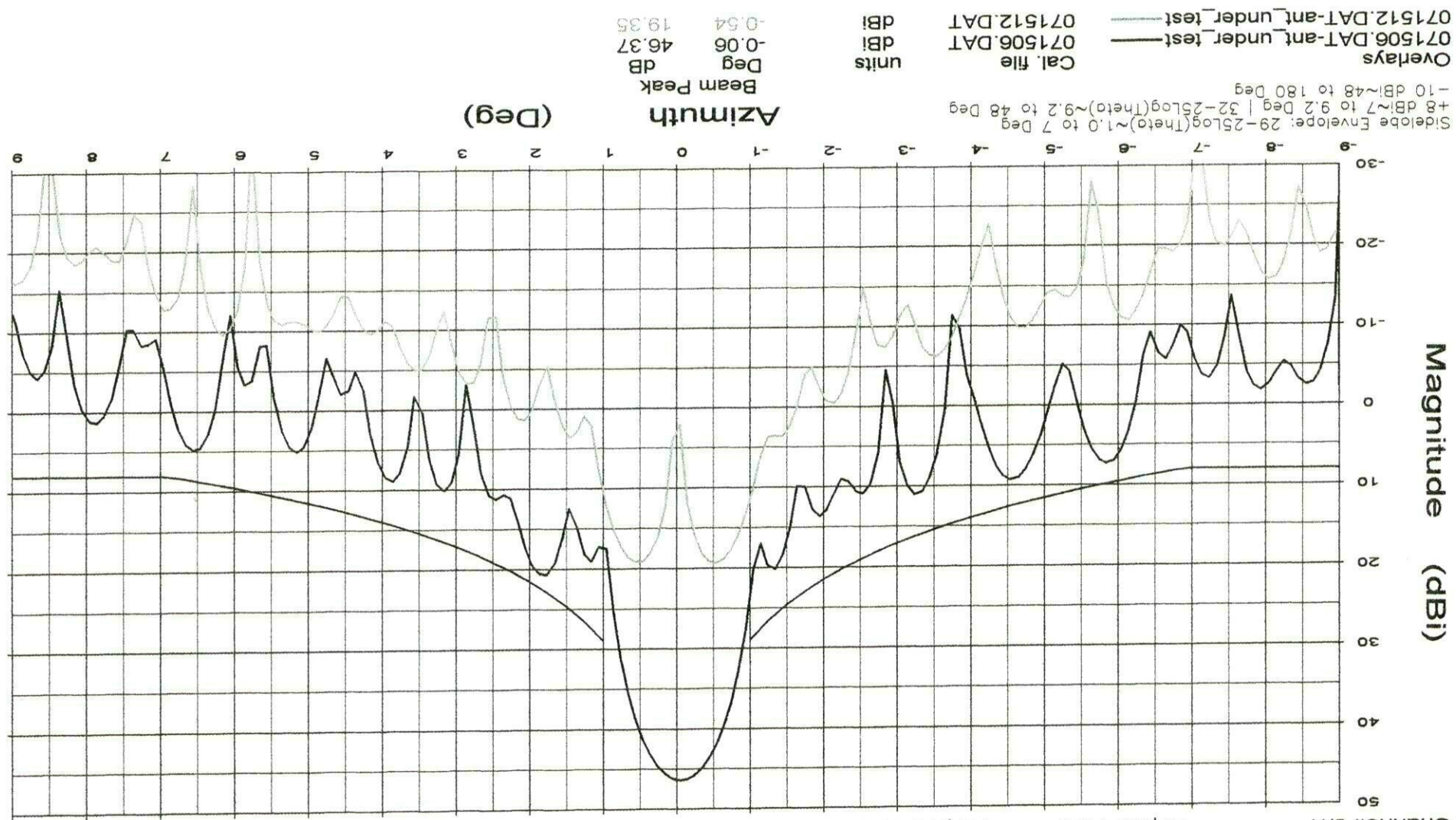
Frequency : 14.250 GHZ

Operator: Ken Poovey

Ser. No.

Channel: ch1

Tx pol: Vert.
Rx pol: Vert.



Overlays
071506.DAT-ant_under_test
071512.DAT-ant_under_test

Side Lobe Envelope: 29-25log(theta)~1.0 to 7 Deg
+8 dBi~7 to 9.2 Deg | 32-25log(theta)~9.2 to 48 Deg
-10 dBi~48 to 180 Deg

File: See Legend

1.8M .8 f/d Ku-Band Antenna System

Frequency : 14.500 GHz

Operator: Ken Poovey
Ser. No.
Channel: ch1

Tx pol: Vert.
Rx pol: Vert.

