

GENERAL DYNAMICS
SATCOM Technologies

4096-229
REVISION E
July 28, 2009

ASSEMBLY MANUAL

2.4M & 3.8M PEDESTAL MOUNT FOUNDATION REQUIREMENTS

General Dynamics
SATCOM Technologies
1500 Prodelin Drive
Newton NC 28658 USA
828-464-4141

2.4M & 3.8M PEDESTAL MOUNT FOUNDATION REQUIREMENTS

E	Revised Company Name, Logo, and Part Tables	7/28/09	RAH
D	Revise Hardware	2/7/05	
C	Revised Address	1/10/02	RAH
B	Revised Cover Page	6/18/99	RAH
A	Added Text.	2/15/94	R.F.
-	ORIGINAL RELEASE	06/91	
REV.	DESCRIPTION	DATE	APPROVED

SUGGESTED FOUNDATIONS

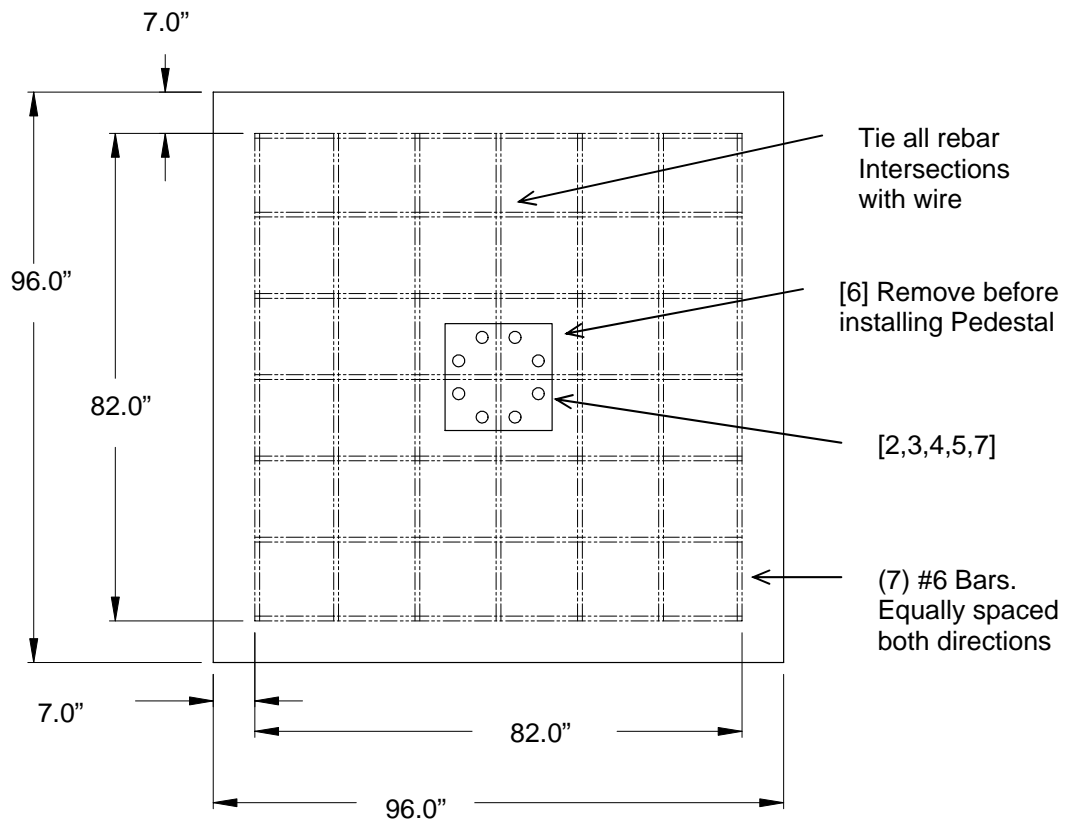
NOTE: Due to the wide variety of soil conditions, General Dynamics does not warrant that any particular design or size of foundation is appropriate for any locality or earth station installation. It is the responsibility of the installer/user to determine if it meets the site/locality requirements. If there is any doubt, have it checked by an architect or structural engineer.

PEDESTAL FOUNDATION

Figure 1 shows a suggested Pad Foundation and figure 2 shows a suggested Pier Foundation. Both foundations utilize General Dynamics' Pedestal Mount. To install the Pedestal Mount foundation, follow the steps below.

1. Install one [1] 1-8 hex nut and one [1] 1" flatwasher (items# 2,4) onto the anchor rod (item# 7), then insert the anchor rod into one of the holes in the plywood template (item# 6) and install another 1-8 hex nut and 1" narrow flatwasher (item #3). Repeat this procedure for the remaining anchor rods. This will keep all the anchor rods in the straight and proper orientation when the concrete is poured. Next, install two [2] 1-8 hex nuts and one [1] flatwasher (items# 2,4) on the other end of each anchor rod. See figures 1 and 2.
2. Once the site location is determined, dig up the area where the foundation will be installed. Be careful not to dig too deep because the soil in the bottom and sides of the foundation should be undisturbed. Position the reinforcing bars as shown. Position the anchor rods so that the flatwashers are positioned under the reinforcing bars. Pour concrete and allow to dry for 24 hours.
3. Once the concrete is dry, remove the plywood template and screw the lower hex nuts as far down on the anchor rods as possible. Then install the mast pipe (item# 1) on to the anchor rods. Adjust the lower hex nuts until the mast pipe is level in the vertical position. Reinstall the flatwashers, lockwashers and hex nuts. With the mast pipe tightened down, fill the space between the concrete slab and the mast pipe base with grout.

FOUNDATION PARTS LIST			
ITEM#	PART#	DESCRIPTION	QTY
1	0490-285	3.8M PEDESTAL MAST PIPE	1
	OR 0490-472	2.4M EXTENDED PEDESTAL MAST PIPE	1
2	8107-007	1-8 HEX NUT	32
3	8201-049	1" FLATWASHER (NARROW)	8
4	8201-046	1" FLATWASHER	16
5	8202-046	1" LOCKWASHER	8
6	0274-013	TEMPLATE	1
7	0180-238	1-8 x 36" ANCHOR ROD	8



Pad Layout

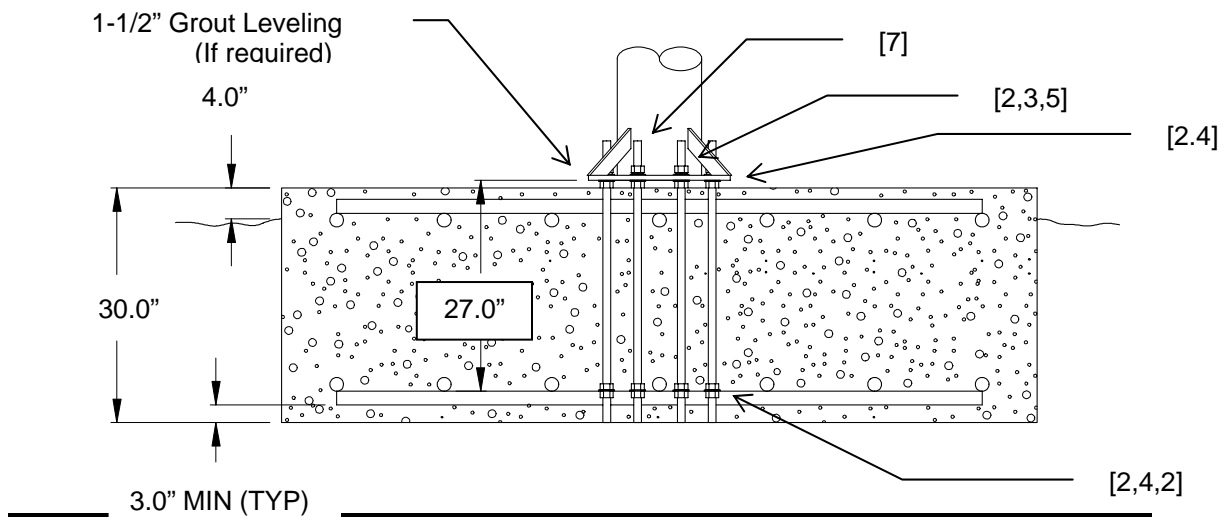


Figure 1.

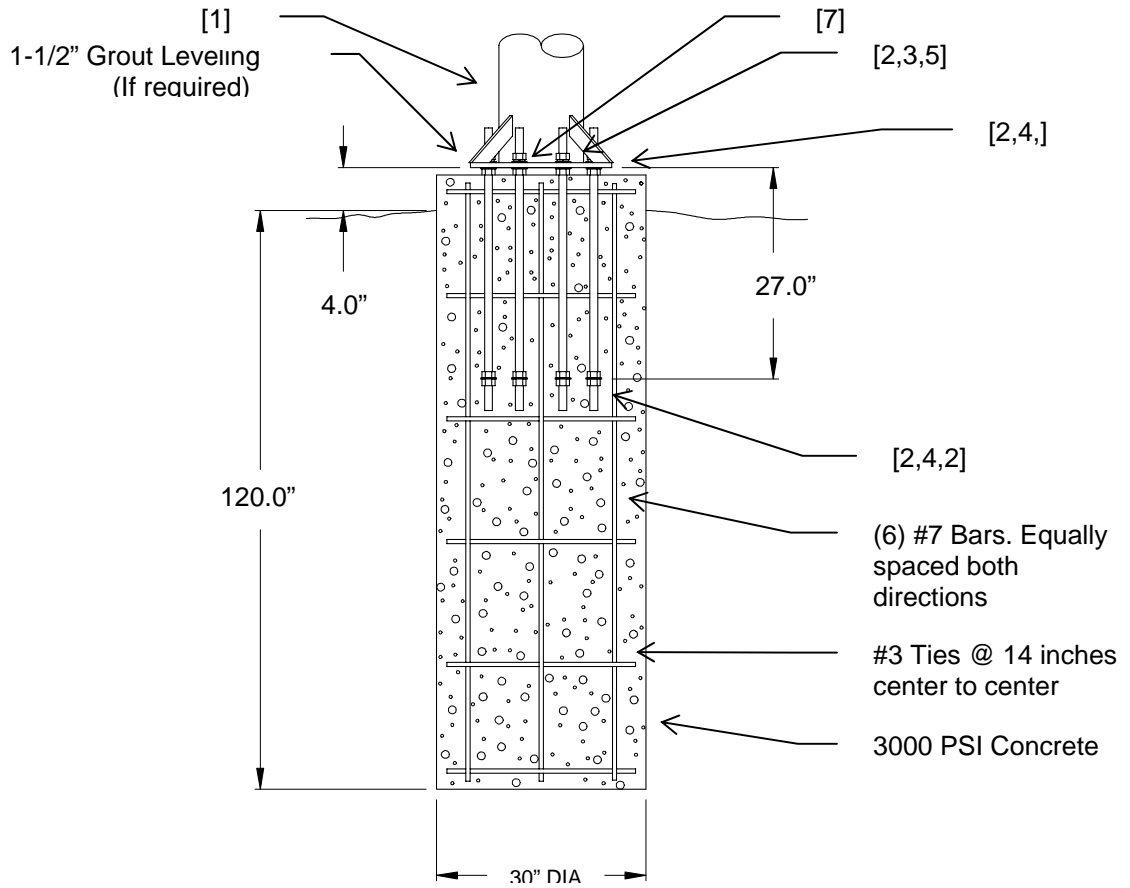


Figure 2.