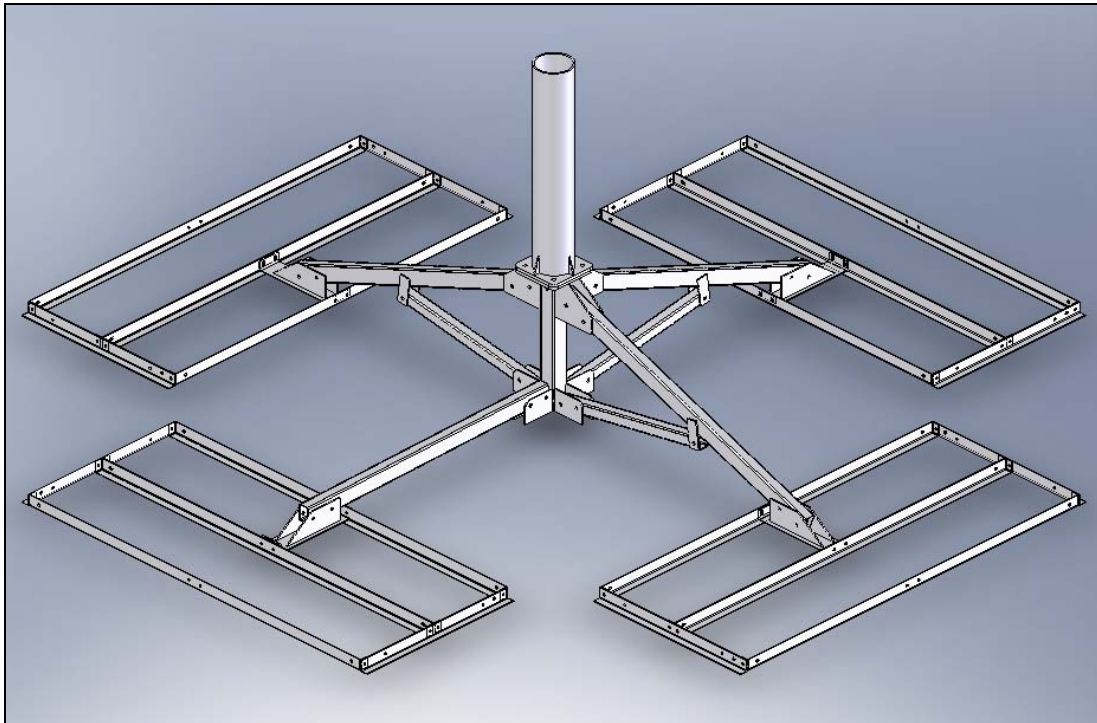


GENERAL DYNAMICS
C4 Systems

4096-747
April 27, 2007

INSTALLATION MANUAL

Non Penetrating Mast Mount for 2.4M Antennas



GENERAL DYNAMICS
PRODELIN CORPORATION
1500 Prodelin Drive
Newton NC 28658USA
Phone 828-464-4141
www.gdsatcom.com

Non-Penetrating Mast Mount Assembly Instructions

-	Released	04/23/2007	DB
REV.	<u>DESCRIPTION</u>	<u>DATE</u>	<u>APPROVED</u>

ASSEMBLY MANUAL

NON-PENETRATING MAST MOUNT

TABLE OF CONTENTS

<u>SECTION</u>	<u>TITLE</u>
I	GENERAL INFORMATION
1.0	GENERAL INFORMATION
1.1	UNPACKING & INSPECTION
1.2	SUGGESTED TOOL LIST
1.3	PARTS LIST
II	ASSEMBLY INSTRUCTIONS
III	BALLAST REQUIREMENTS
3.0	BALLAST REQUIREMENTS TABLE
3.1	BALLAST REQUIREMENTS
3.2	INFORMATION

SECTION I**1.0 GENERAL INFORMATION**

1. Prior to installation, verify that the installation site roof material and supporting structure have been investigated and found capable of withstanding all loads imposed by the proposed antenna system. Confirm that the anchors, and/or safety cables, if required, have been found to be adequate to resist the reactions from the antenna system and that the installation will be in accordance with all applicable local, state, and federal requirements.
2. All antenna installations should be grounded to meet all applicable codes.
3. Rubber pads are provided to protect the roof surface.
4. All necessary hardware is provided.
5. For calculating ballast requirements, refer to chart in section 3.
6. All metal parts are galvanized to help prevent corrosion.

1.1 UNPACKING & INSPECTION

1. **UNPACKING & INSPECTING**
The mount should be unpacked and inspected at the earliest date to ensure that all material has been received and is in good condition. A complete packing list for each major component is supplied.
2. **FREIGHT DAMAGE**
Any damage to materials while in transit should be immediately directed to the freight carrier. He will instruct you on the matters regarding any freight damage claims.
3. **MATERIAL - MISSING OR DAMAGED**
Any questions regarding missing or damaged materials that is not due to freight carrier should be directed to Prodelin's Customer Service Department at:

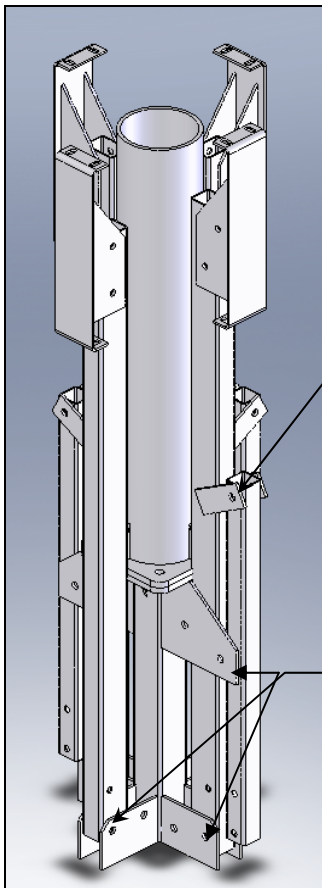
General Dynamics
1500 Prodelin Drive
Newton NC 28658
USA
(828) 464-4141

1.2 SUGGESTED TOOL LIST

1. The following tools are suggested for site preparation.
 - Shovel (for ground installation)
 - Broom

2. The following tools are suggested for the NPMM installation.
 - Ratchet
 - Sockets: 9/16", 3/4", 15/16"
 - Wrenches, combination: 9/16", 3/4", 15/16"
 - Tape measure

SECTION II



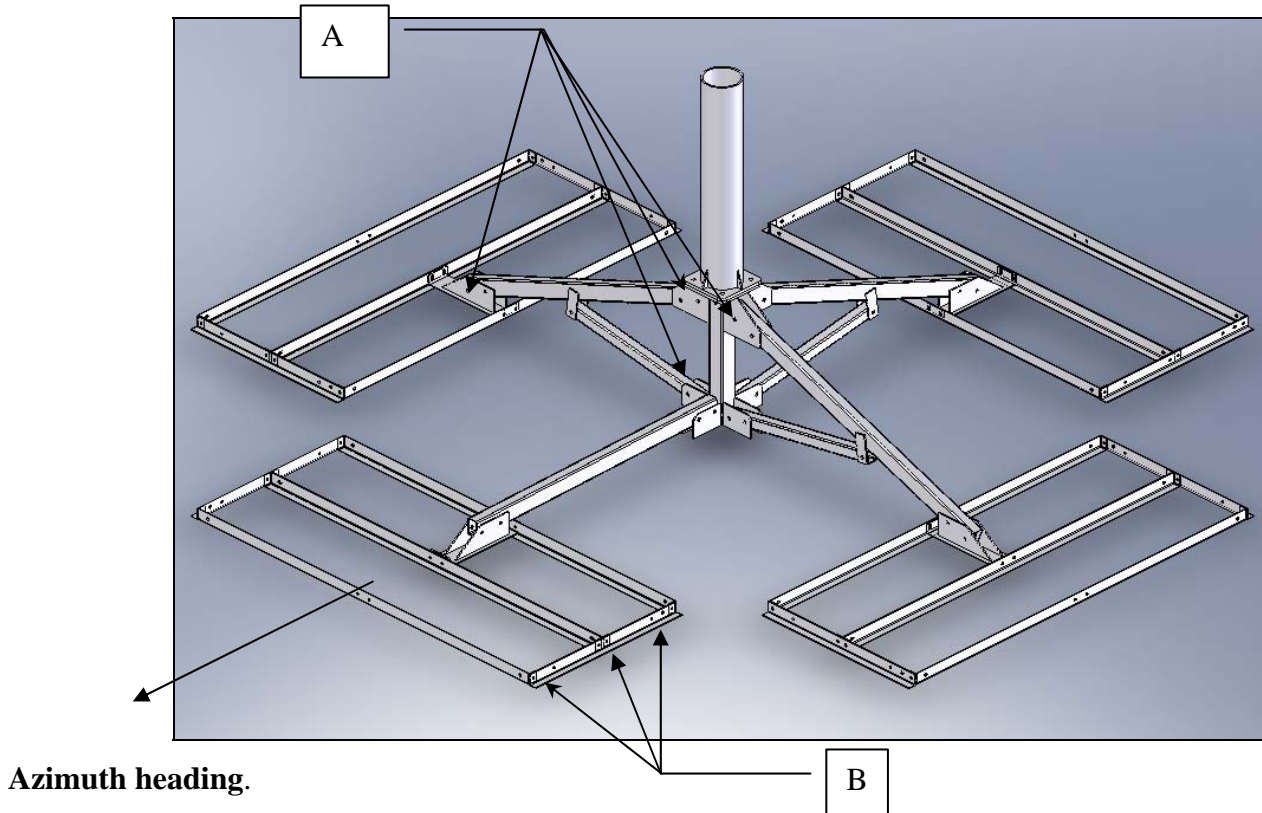
This mount is shipped direct from the factory assembled as shown in figure 1. It must be re-configured on-site in order to properly deploy the mount. Hardware bag is located inside of mast pipe.

Step one

Step two

- Phase 1**
- 1 Loosen (do not remove) hardware on leg support
 - 2 Remove hardware at all other locations where legs are attached to mast assembly

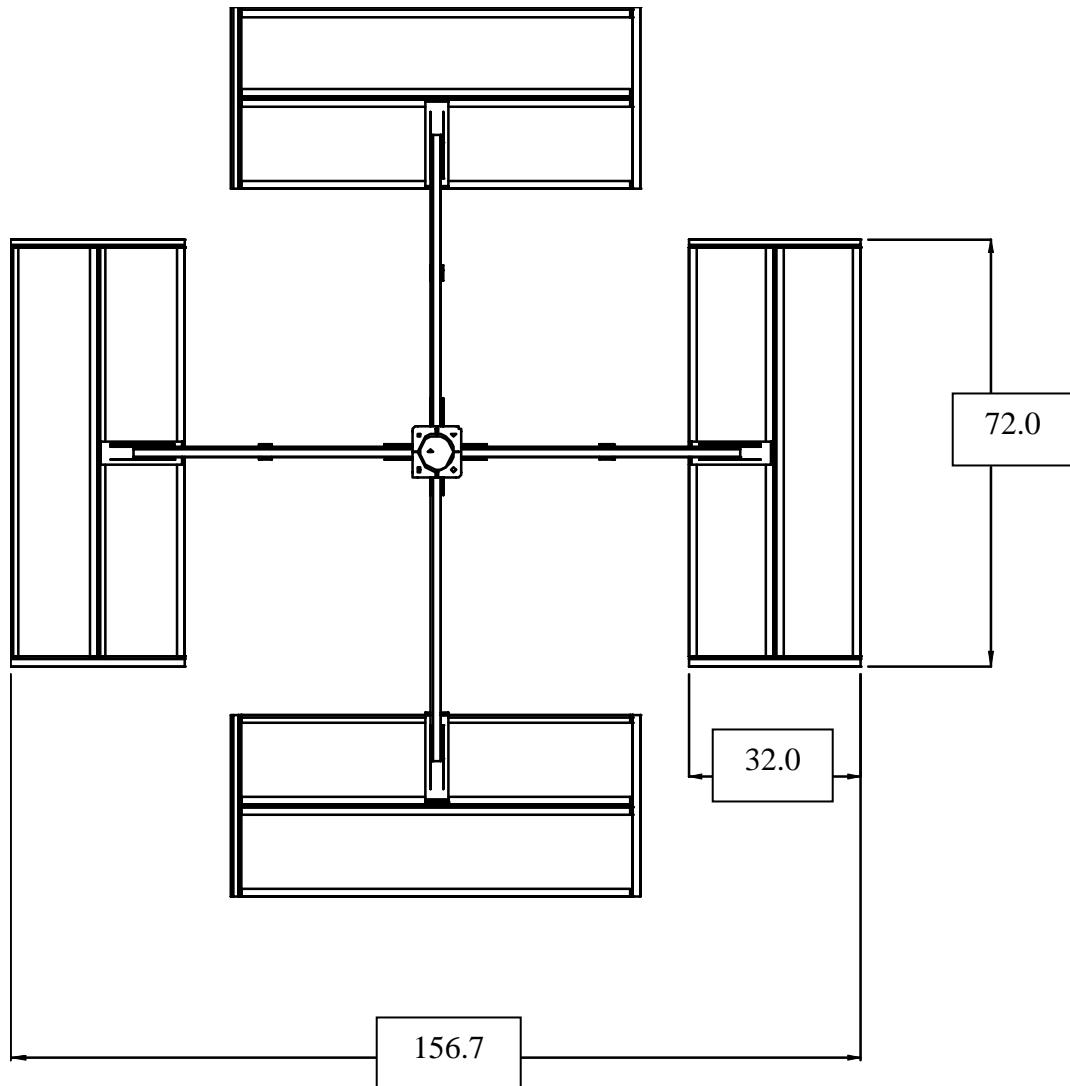
Figure 1

**Figure 2****Phase 2**

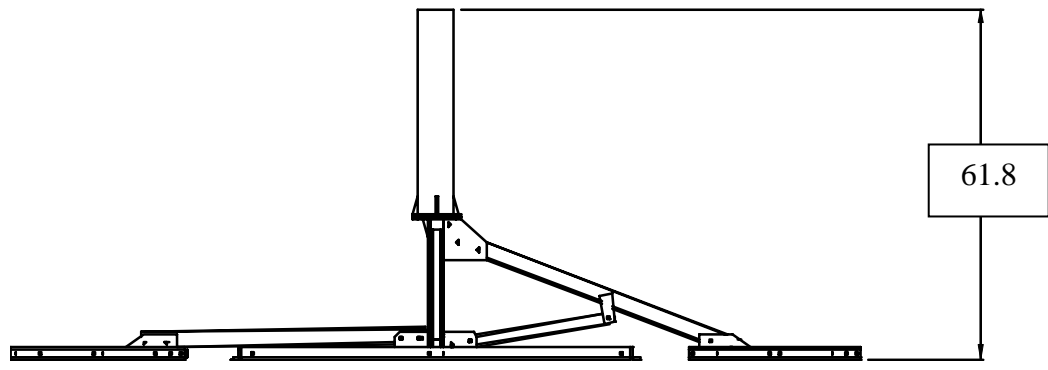
Do not tighten hardware until step 4.

- 1 Re-assemble mount as shown in figure 2 using 1/2" hardware at locations marked "A".
- 2 Assemble ballast trays as shown in figure 2 using 3/8" hardware at locations marked "B".
- 3 Attach feet to ballast trays using 3/8" hardware. (Marked "B".)
- 4 Tighten all hardware.

Mount should be positioned such that the "drop leg" is aimed in the same direction as the azimuth heading of the antenna. It will allow clearance for the reflector at low look angles.



- Pad area: 16 sq ft.
- Finish: Hot dip galvanized
- Suitable for Ku and C-Band Receive/Transmit 2.4M Antennas



SECTION III**3.1 EXPOSURE:**

1. Exposure B is urban or suburban areas, wooded areas, or other terrain with numerous, closely spaced obstructions having the size of single family dwellings or larger. Obstructions must extend 1500 feet in all directions from the antenna.
2. Exposure C is open terrain with widely scattered obstructions having heights generally less than 30 feet. Includes flat open country and grass lands.

3.2 BALLAST:

1. Ballast tables are based on an overturning design with a 1.5 safety factor. Values shown provide sliding resistance to the wind speed shown with a 1.0 safety factor when used with a rubber friction pad (coefficient of friction = .64).
2. Recommended ballast material is concrete cap block, nominal dimensions of 4 x 8 x 16 inches. These blocks will weigh between 25 and 30 lbs each, depending on local variation. Average weight of blocks should be determined for correct ballast amount.
3. Place ballast equally on all frames beginning at opposite corners of each side and working inward. If needed, begin a second layer on top of the first.
4. Under extreme wind conditions, the mount should be tethered with cables.
5. It is the customer's responsibility to ensure that all applicable codes and restrictions are satisfied. If in doubt, please consult a local structural engineer.

Ballast table (Table 3.0.1) provided on following page.

TABLE 3.0-1 – 2.4 M VSAT ANTENNAS

Code: ANSI/ASCE 7-88

		Building Height (ft)	0-20		20-40		0-20		20-40		0-20		20-40		0-20		20-40	
			Wind Speed		70		80		90		100		110		120		125	
Tethered on any type roof	Total Weight Required	Exp "B"	321	400	419	523	531	661	655	817	793	988	944	1176	1024	1276		
		Exp "C"	543	631	710	825	898	1044	1109	1289	1342	1559	1597	1855	1733	2013		
	Static Roof Load (Pounds per Square Foot)	Exp "B"	3	4	4	5	6	7	7	9	8	10	10	12	11	13		
		Exp "C"	6	7	7	9	9	11	12	13	14	16	17	19	18	21		
	Net Ballast Required (lbs)	Exp "B"	0	0	0	0	0	0	0	70	46	241	197	429	277	529		
		Exp "C"	0	0	0	78	151	297	362	542	595	812	850	1108	986	1266		

		Wind Speed	70		80		90		100		110		120		125	
Untethered Built-up Roof cu=.75	Total Weight Required	Exp "B"	649	809	848	1057	1073	1337	1325	1651	1603	1998	1908	2377	2070	2580
		Exp "C"	1099	1276	1435	1667	1816	2110	2242	2605	2713	3152	3228	3751	3503	4070
	Static Roof Load (Pounds per Square Foot)	Exp "B"	7	8	9	11	11	14	14	17	17	21	20	25	22	27
		Exp "C"	11	13	15	17	19	22	23	27	28	33	34	39	36	42
	Net Ballast Required (lbs)	Exp "B"	0	62	101	310	326	590	578	904	856	1251	1161	1630	1323	1833
		Exp "C"	352	529	688	920	1069	1363	1495	1858	1966	2405	2481	3004	2756	3323

		Wind Speed	70		80		90		100		110		120		125	
Untethered Rubber Membrane Roof cu=.70	Total Weight Required	Exp "B"	696	867	909	1132	1150	1433	1420	1769	1718	2140	2044	2547	2218	2764
		Exp "C"	1177	1368	1537	1786	1946	2261	2402	2791	2906	3377	3459	4019	3753	4361
	Static Roof Load (Pounds per Square Foot)	Exp "B"	7	9	9	12	12	15	15	18	18	22	21	27	23	29
		Exp "C"	12	14	16	19	20	24	25	29	30	35	36	42	39	45
	Net Ballast Required (lbs)	Exp "B"	0	120	162	385	403	686	673	1022	971	1393	1297	1800	1471	2017
		Exp "C"	430	621	790	1039	1199	1514	1655	2044	2159	2630	2712	3272	3006	3614

		Wind Speed	70		80		90		100		110		120		125	
Untethered Concrete Roof cu=.64	Total Weight Required	Exp "B"	761	948	994	1238	1258	1567	1553	1935	1879	2341	2236	2786	2426	3023
		Exp "C"	1287	1496	1681	1954	2128	2472	2627	3052	3179	3693	3783	4396	4105	4769
	Static Roof Load (Pounds per Square Foot)	Exp "B"	8	10	10	13	13	16	16	20	20	24	23	29	25	31
		Exp "C"	13	16	18	20	22	26	27	32	33	38	39	46	43	50
	Net Ballast Required (lbs)	Exp "B"	14	201	247	491	511	820	806	1188	1132	1594	1489	2039	1679	2276
		Exp "C"	540	749	934	1207	1381	1725	1880	2305	2432	2946	3036	3649	3358	4022

3.3 BALLAST REQUIREMENT INFORMATION

1. Ballast requirements are provided to assist in determining the applicability of the NPMM for an antenna installation. The ballast data should not be relied upon without competent local professional examination and verification of its accuracy and suitability for a specific site or application.
2. Specific antenna types may require more strength and ballast requirements and must be investigated for each installation. The load carrying requirements of the supporting surface, the mast, the antenna and the antenna's connection to the mast must also be investigated for each installation.
3. Roof pads are recommended to prevent damage to roof membranes. Pads should be placed under all ballast and under the mast pipe. When roof pads are utilized, the minimum coefficient of friction between the ballast pans and roof pad or between the roof pads and the supporting surface must be used to calculate the wind speeds resulting in sliding.
4. When adhesive, sealant or pads are utilized; they must be compatible with the supporting surface. They must also be durable and have adequate strength. Precautions should also be taken to insure that damage to the supporting surface will not occur upon wind loading. Adhesives and sealants must be capable of resisting shear; otherwise, they may act as a lubricant and decrease the effective coefficient of friction between the ballast and the supporting structure.
5. The installation, roof materials and supporting structure must be capable of withstanding all loads imposed by the antenna system. Supporting structure, anchors and/or safety cables must be sufficient to resist the reactions from the antenna system. The installation must meet all applicable, local, state and federal requirements.

Due to the many variables involved, General Dynamics does not accept responsibility for verifying the applicability of the NPMM for specific installations.