



4096-583

May 13, 2002

**ASSEMBLY MANUAL
Revision E**

**3.8M Ku-BAND DUAL OPTICS
ANTENNA SYSTEM
Series 1388**

**PRODELIN CORPORATION
1500 Prodelin Drive
Newton NC 28658**

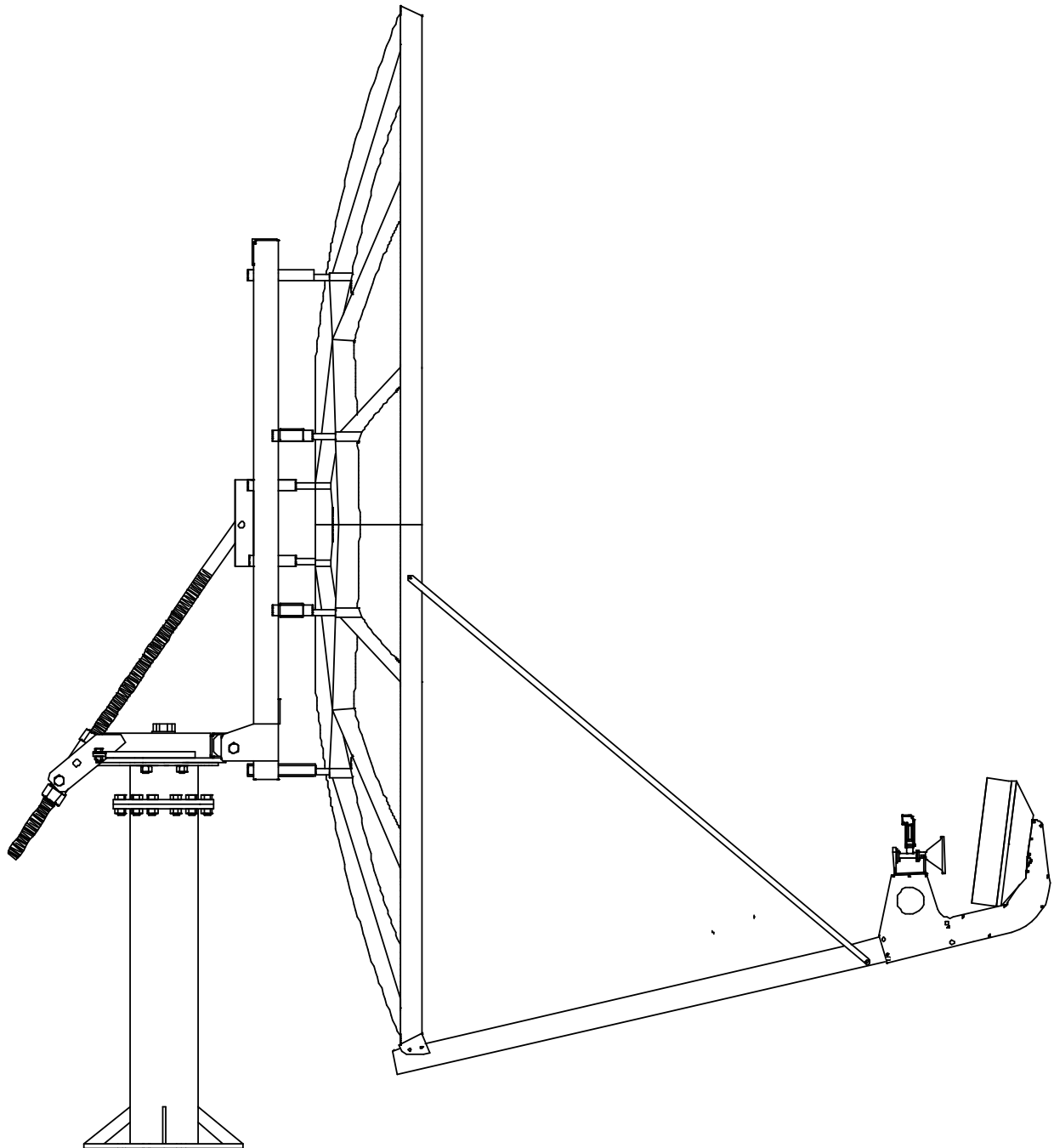
3.8M Ku-BAND DUAL OPTICS ANTENNA SYSTEM

Series 1388

REV.	DESCRIPTION	DATE	APPROVED
E	Revised Labeling Text	5/13/02	
D	Revised pages 14, 17 and added assembly check option on page 18.	1-16-02	RAH
C	Revised Address	1/7/02	RAH
B	Revised part number page 9	6/21/00	RAH
A	Added warning to page 16	4/26/99	RAH
-	ORIGINAL ISSUE	12/7/98	RF

3.8 METER Ku-BAND Rx/Tx ANTENNA SYSTEM**TABLE OF CONTENTS**

<u>SECTION</u>	<u>TITLE</u>
I	GENERAL INFORMATION
1.0	INTRODUCTION
1.1	UNPACKING AND INSPECTION
1.2	MECHANICAL INSTALLATION TOOLS
1.3	SITE SELECTION
II	MAST AND FOUNDATION
2.0	IN-GROUND MAST
2.1	PEDESTAL FOUNDATION
III	REFLECTOR AND SUPPORT ASSEMBLY
3.0	PART LIST
3.1	AZ/EL POSITIONER INSTALLATION
3.2	REFLECTOR QUADRANT ORIENTATION
3.3	REFLECTOR SUPPORT ASSEMBLY
IV	FEED SUPPORT ASSEMBLY
4.0	PART LIST
4.1	FEED SUPPORT INSTALLATION
4.2	Ku-BAND DUAL OPTICS FEED ASSEMBLY
V	ANTENNA POINTING
5.0	ALIGNMENT TO SATELLITE
5.1	INITIAL ALIGNMENT
VI	MAINTENANCE
6.0	MAINTENANCE OVERVIEW
6.1	PERIODIC INSPECTION
6.2	REFLECTOR
6.3	MOUNT & REFLECTOR SUPPORT STRUCTURE
6.4	FEED & FEED SUPPORT



SECTION I

GENERAL INFORMATION

1.0 **INTRODUCTION**

This manual describes the assembly and installation of Prodelin's 3.8M Ku Band Dual Optics antenna system. The Prodelin 3.8M is a rugged, reliable antenna system that will operate at Ku-band frequencies with high efficiency and at the same time successfully withstand the effects of the environment.

These instructions are listed by sections that cover all areas of assembly and installation. Additional sections are included in the manual to provide information on antenna alignment to the satellite and maintenance.

1.1 **UNPACKING AND INSPECTION**

1. **UNPACKING & INSPECTION** - The antenna containers should be unpacked and inspected at the earliest date to ensure that all material has been received and is in good condition. A complete packing list for each major component is supplied.

CAUTION: DO NOT DRAG REFLECTOR SUPPORT FRAME ON THE ADJUSTMENT THREAD RODS AS THESE ARE FACTORY SET AND MUST NOT BE ALTERED!

2. **FREIGHT DAMAGE** - Any damage to materials while in transit should be immediately directed to the freight carrier. He will instruct you on the matters regarding any freight damage claims.
3. **MATERIAL - MISSING OR DAMAGED** - Any questions regarding missing or damaged materials that is not due to freight carrier should be directed to Prodelin's Customer Service Department at:

**PRODELIN CORPORATION
1500 Prodelin Drive
Newton NC 28658
USA
(828) 464-4141**

1.2 MECHANICAL INSTALLATION TOOLS

HARDWARE SIZE	SAE WRENCH SIZE	METRIC WRENCH SIZE	MAXIMUM REC. TORQUE
1 / 4"	7 / 16"	11 mm	80 in-lbs
5 / 16"	1 / 2"	13 mm	140 in-lbs
3 / 8"	9/16"	14 mm	20 ft-lbs
1 / 2"	3 / 4"	20 mm	45 ft-lbs
3 / 4"	1 – 1 / 8"	28 mm	140 ft-lbs
7 / 8"	1 – 1 / 4"	32 mm	N / A
1"	1 – 1 / 2"	38 mm	220 ft-lbs

Also recommended for installation:

Adjustable Crescent Wrench 10"
 Ratchet (3 / 8" & 1 / 2" Drive)
 3" Wrench (socket, crescent or pipe) for 2" bolt
 Allen Wrench, 5/32"
 Screw Driver (standard and cross blade)
 Inclinometer
 Compass
 Step Ladder

1.3 SITE SELECTION

In order to achieve maximum performance of your antenna system, it is important to select the correct location for the antenna. The following guidelines should be observed when selecting a site for the installation.

1. The line of site to the satellite should be clear of any obstructions, such as trees or buildings.
2. The site should be relatively flat and level for ease of installation and access to the antenna.
3. The site should be checked for underground obstruction, such as buried cables or pipes.
4. All local building codes should be adhered to (i.e. grounding, foundation requirements, zoning rules, setbacks, etc.).

SECTION II

SUGGESTED MAST AND FOUNDATIONS

NOTE: Due to the wide variety of soil conditions, Prodelin Corporation does not warrant that any particular design or size of foundation is appropriate for any locality or earth station installation. It is the responsibility of the installer/user to determine if it meets the site/locality requirements. If there is any doubt, have it checked by an architect or structural engineer.

2.0 IN-GROUND MAST MOUNT

Figure 1 shows a suggested In-Ground Mast. The pipe is a 15 ft. length of 10" schedule 40. Due to the high cost of shipping, Prodelin recommends site procurement. Note that the Az/EI Positioner Interface is a Slip Flange, which is included with the antenna.

2.1 PEDESTAL FOUNDATION

Figure 2 shows a suggested Pad Foundation and figure 3 shows a suggested Pier Foundation. Both foundations utilize Prodelin's Pedestal Mount. To install the Pedestal Mount foundation, follow the steps below.

1. Install one [1] 1-8 hex nut and one [1] 1" flatwasher (items 2,3) onto the anchor rod (item 5), then insert the anchor rod into one of the holes in the plywood template (item 6) and install another 1-8 hex nut and 1" flatwasher. Repeat this procedure for the remaining anchor rods. This will keep all the anchor rods in the straight and proper orientation when the concrete is poured. Next, install two [2] 1-8 hex nuts and one [1] flatwasher (items 2,3) on the other end of each anchor rod. See following pad layout and figures 2 & 3.
2. Once the site location is determined, dig up the area where the foundation will be installed. Be careful not to dig too deep because the soil in the bottom and sides of the foundation should be undisturbed. Position the reinforcing bars as shown. Position the anchor rods so that the flatwashers are positioned under the reinforcing bars. Pour concrete and allow to dry for 24 hours.
3. Once the concrete is dry, remove the plywood template and screw the lower hex nuts as far down on the anchor rods as possible. Then install the mast pipe (item 1) on to the anchor rods. Adjust the lower hex nuts until the mast pipe is level in the vertical position. Reinstall the flatwashers, lockwashers and hex nuts. With the mast pipe tightened down, fill the space between the concrete slab and the mast pipe base with grout.

IN-GROUND MAST MOUNT

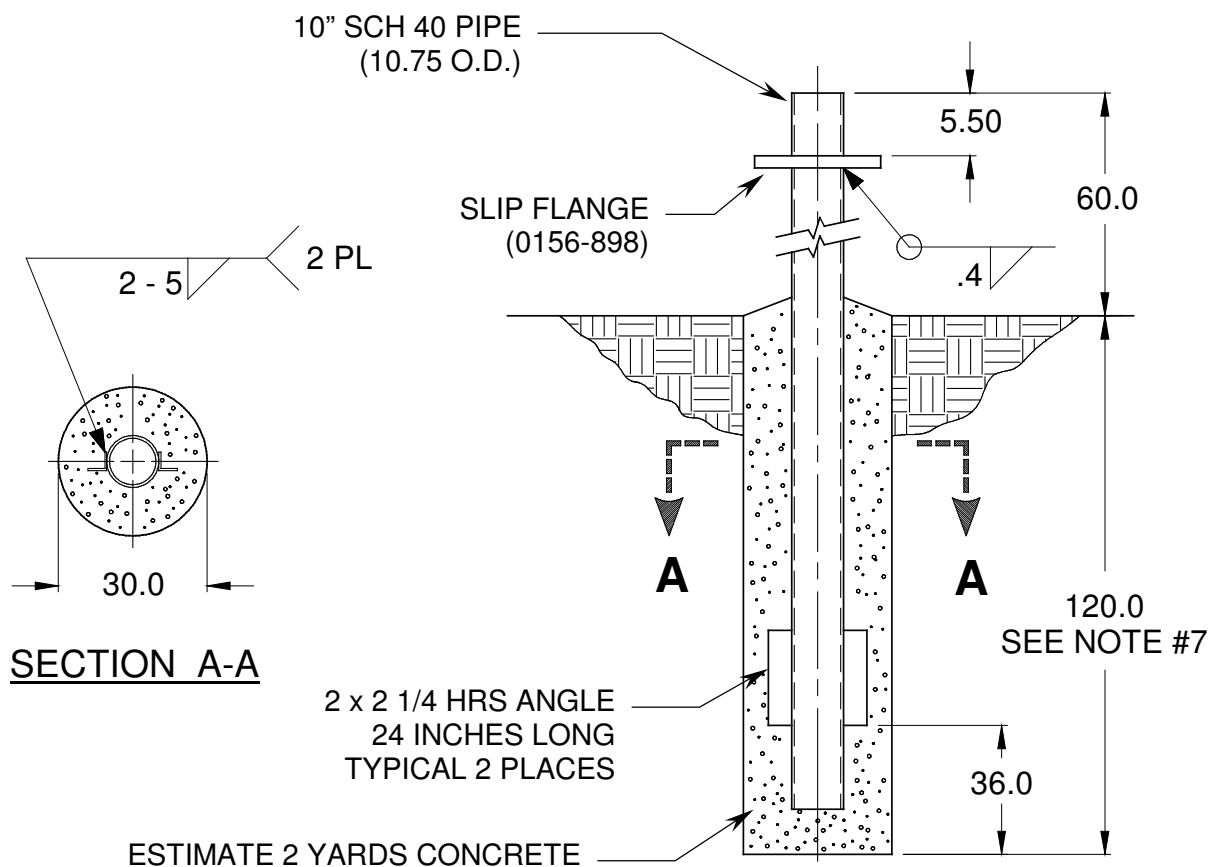


Figure 1.

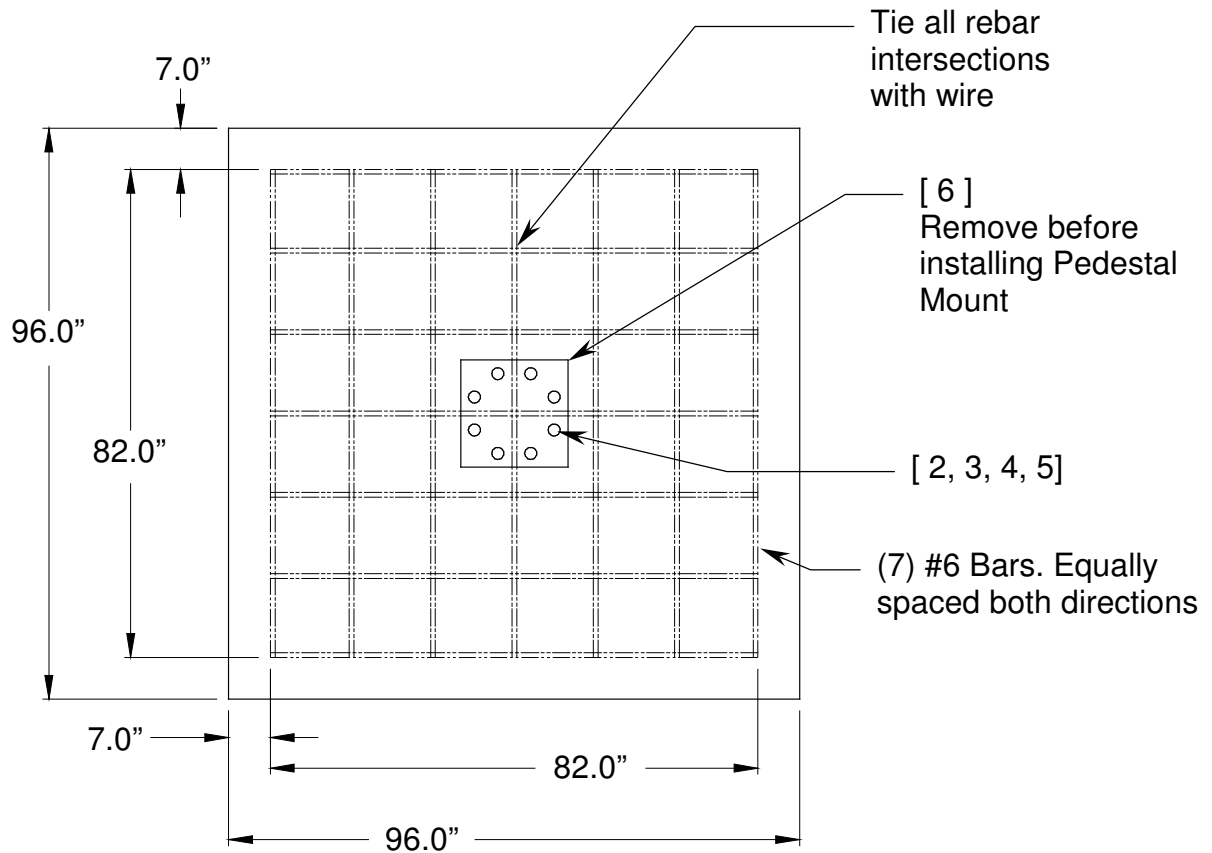
NOTES:

1. 2 x 2 x 1/4 HRS ANGLE & 10" SCHEDULE 40 PIPE SHOULD CONFORM TO ASTM A36 STRUCTURAL STEEL.
2. ALL CONCRETE SHOULD CONFORM TO BUILDING CODE STANDARDS AND HAVE A MINIMUM COMPRESSIVE STRENGTH OF 3000 PSI AT 28 DAYS. (PER ACI-318-77)
3. SOIL BEARING CAPACITY SHOULD BE NO LESS THAN 2000 PSF.
4. CONCRETE SHOULD BE POURED AGAINST UNDISTURBED SOIL.
5. ALLOW CONCRETE 24 HOUR SET TIME BEFORE INSTALLATION OF ANTENNA.
6. THE ANTENNA SHOULD BE PROPERLY GROUNDED TO MEET APPLICABLE LOCAL CODES.
7. MINIMUM DEPTH AS SHOWN OR EXTENDED TO LOCAL FROST LINE.

(PRODELIN CORP. DOES NOT REPRESENT OR WARRANT THAT ANY PARTICULAR DESIGN OR SIZE OF FOUNDATION IS APPROPRIATE FOR ANY LOCALITY OR EARTH STATION INSTALLATION.)

PEDESTAL FOUNDATIONS

FOUNDATION PART LIST			
ITEM NO.	PART NO.	DESCRIPTION	QTY
1	0490-285	3.8M PEDESTAL MAST PIPE	1
2	8107-007	1-8 HEX NUT	32
3	8201-049	1" FLATWASHER	24
4	8202-046	1" LOCKWASHER	8
5	0180-238	1 - 8 X 36" ANCHOR ROD	8
6	0274-013	TEMPLATE, PLYWOOD	1



PAD LAYOUT

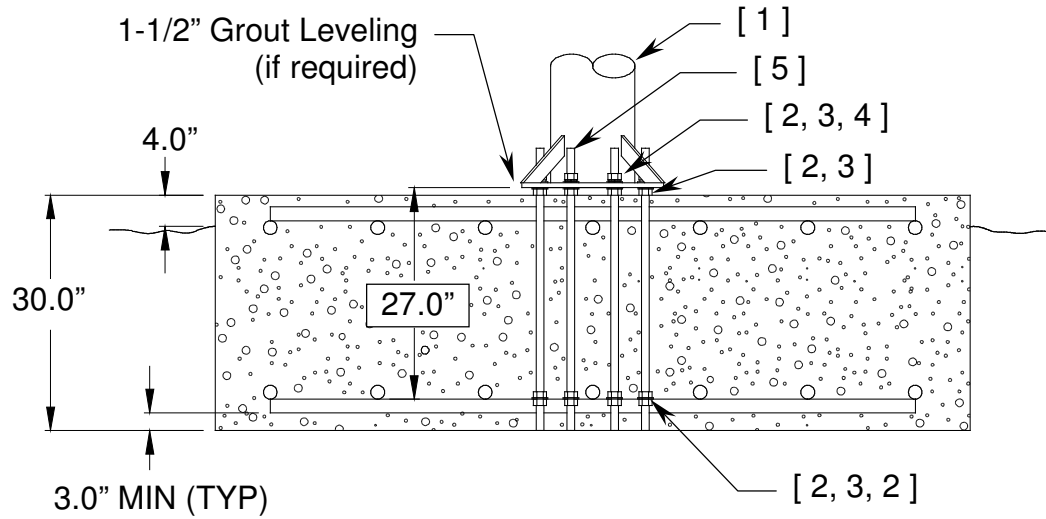


Figure 2.

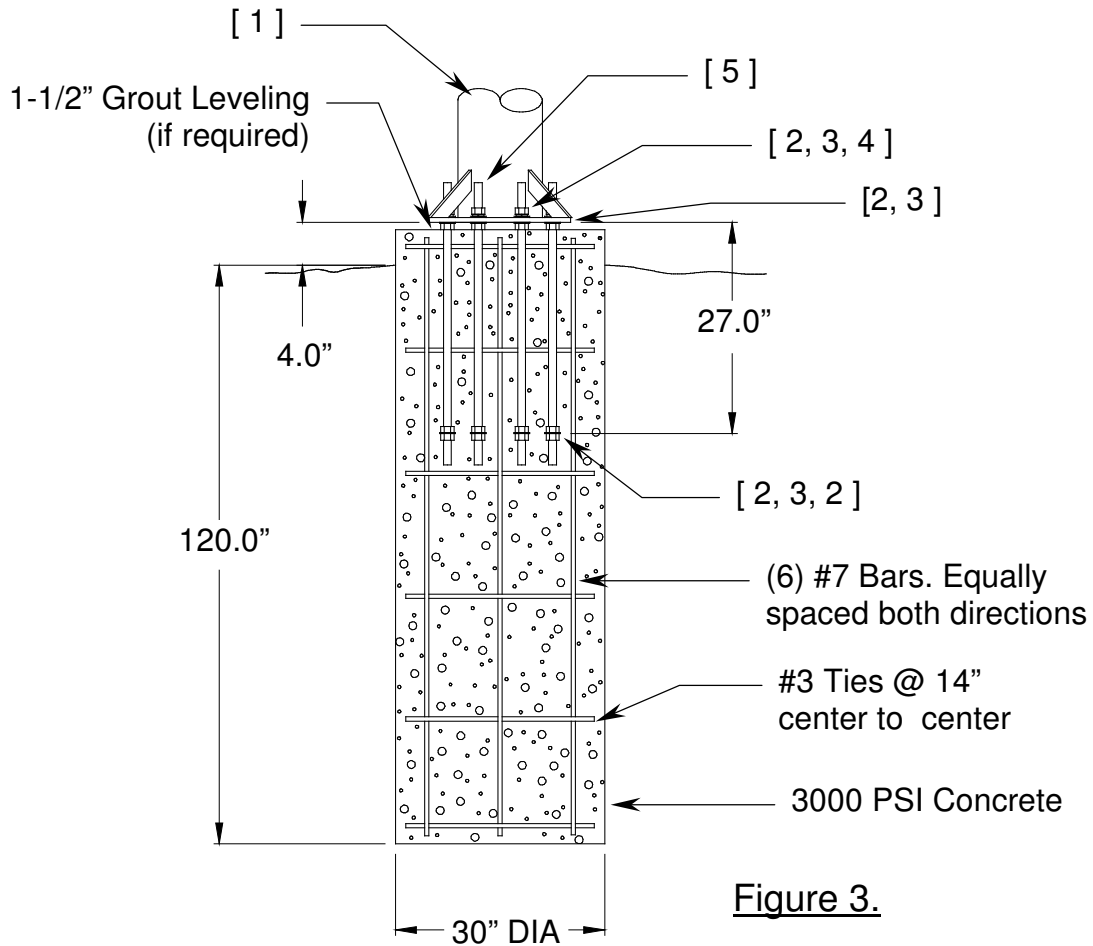


Figure 3.

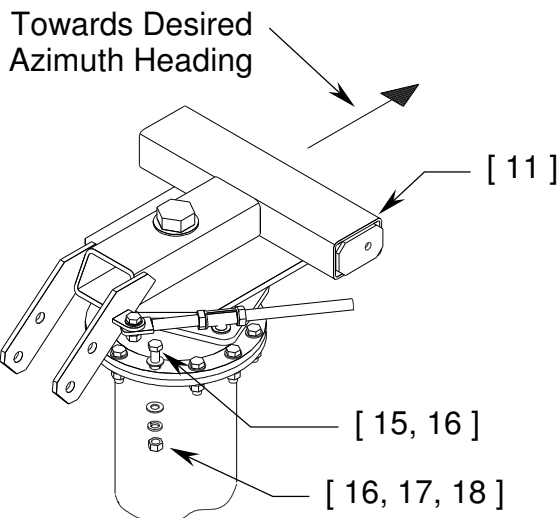
SECTION III REFLECTOR AND SUPPORT ASSEMBLY

REFLECTOR AND SUPPORT ASSEMBLY PART LIST – TABLE 3.0			
ITEM NO.	PART NO.	DESCRIPTION	QTY
1	0159-273	THREADED INSERT - # 1	2
2	0159-272	THREADED INSERT - # 2	2
3	0159-276	THREADED INSERT - # 3	2
4	0159-271	THREADED INSERT - # 4	2
5	0159-275	THREADED INSERT - # 5	2
6	0159-274	THREADED INSERT - # 6	2
7	Varies	REFLECTOR, QUADRANT # 1	1
8	Varies	REFLECTOR, QUADRANT # 2	1
9	Varies	REFLECTOR, QUADRANT # 3	1
10	Varies	REFLECTOR, QUADRANT # 4	1
11	0181-262	Az/EI POSITIONER ASSEMBLY	1
12	0181-485	CROSSARM ASSEMBLY	2
13	0181-486	SUPPORT FRAME ASSEMBLY	1
14	0181-187	ELEVATION ROD ASSEMBLY	1
15	8035-024	BOLT, 3/4 -10 x 3.00	12
16	8201-045	FLATWASHER, 3/4"	24
17	8202-045	LOCKWASHER, 3/4"	12
18	8106-002	NUT, HEX 3/4"	12
19	8201-052	FLATWASHER, 7/8"	12

PART LIST - CONTINUED			
ITEM NO.	PART NO.	DESCRIPTION	QTY
20	8202-052	LOCKWASHER, 7/8"	12
21	8110-007	NUT, HEX 7/8"	12
22	8033-064	BOLT, 1/2 – 13 x 8.00	4
23	8033-072	BOLT, 1/2 – 13 x 9.00	4
24	8033-096	BOLT, 1/2 – 13 x 12.00	4
25	8201-033	FLATWASHER, 1/2"	12
26	8202-043	LOCKWASHER, 1/2"	12
27	8201-033G	FLATWASHER, GREEN 1/2"	12
28	8032-012	BOLT, 3/8 – 16 x 1.50	32
29	8201-042	FLATWASHER, 3/8"	64
30	8202-042	LOCKWASHER, 3/8"	32
31	8102-007	NUT, HEX 3/8"	32
32	8036-016	BOLT, 1 – 8 x 2.00	2
33	8036-036	BOLT, 1 – 8 x 4.50	2
34	8036-040	BOLT, 1 – 8 x 5.00	2
35	8201-049	FLATWASHER, 1"	10
36	8202-046	LOCKWASHER, 1"	8
37	8107-007	NUT, HEX 1"	2

CAUTION: During the assembly procedure, the sequence of instructions must be followed. ***Do Not Tighten Any Hardware Until Instructed.*** Refer to the antenna assembly parts list and the following steps.

3.1 Az/EI POSITIONER INSTALLATION

**STEP 1:**

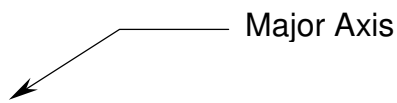
- A) Lift the Az/El positioner assembly (item 11) on top of the pedestal mast so that it rests upon the slip flange.
- B) Rotate the positioner assembly towards the desired azimuth heading as shown.
- C) Once the position is located, rotate the positioner in either direction to the nearest set of holes. The result is a coarse azimuth setting (+/- 30 deg.). The fine azimuth setting will be set later.
- D) Secure the positioner to the pedestal with 3/4" hardware (items 15,16,17,18). Tighten Securely.

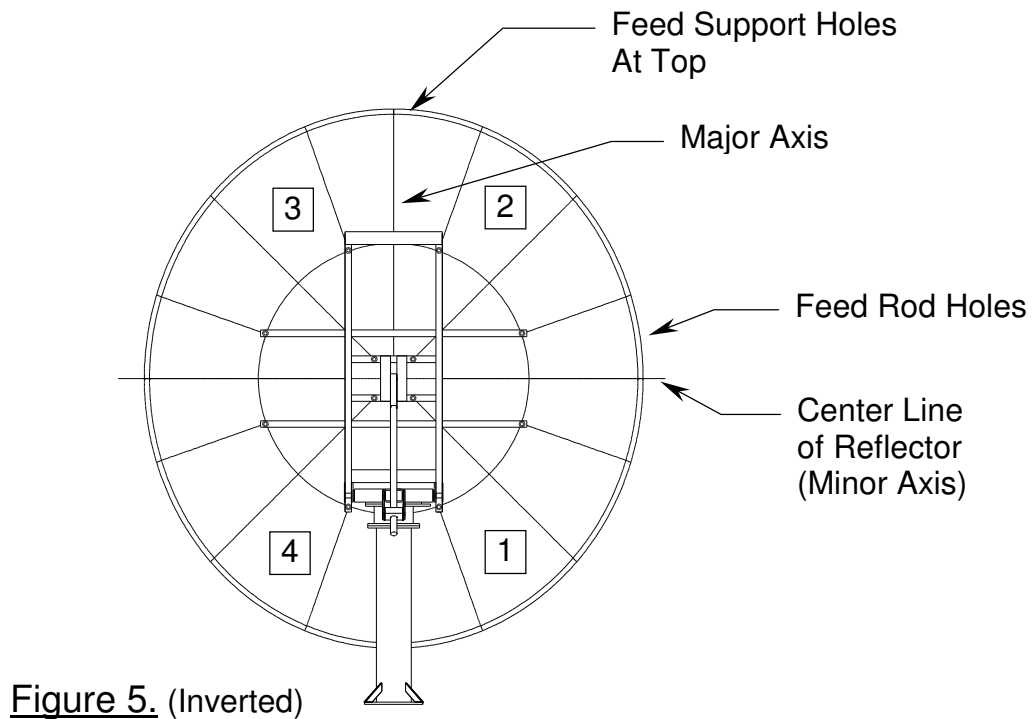
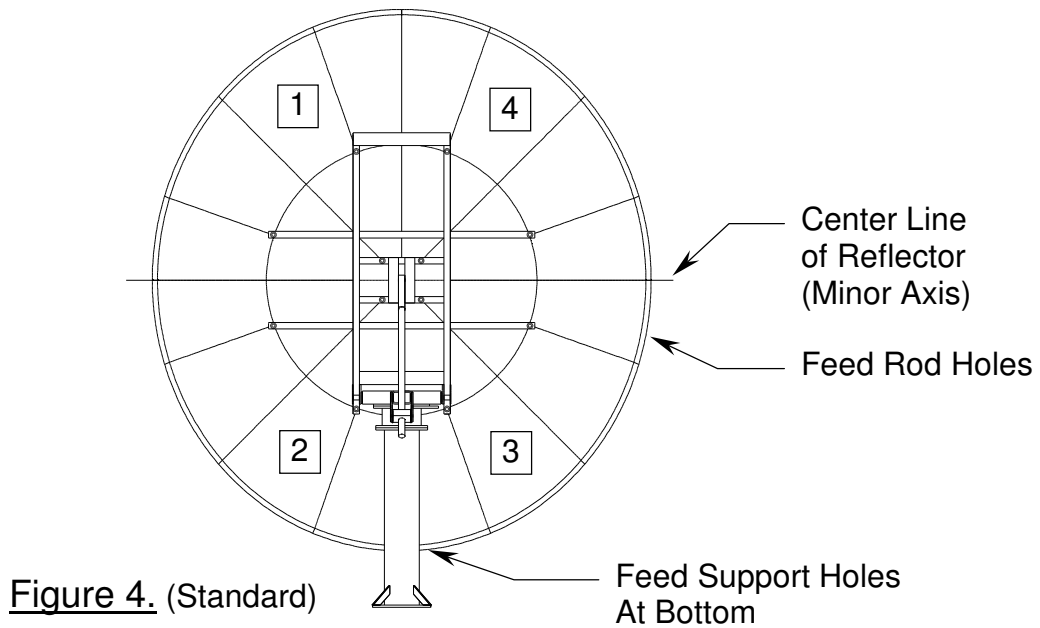
3.2 REFLECTOR QUADRANT ORIENTATION

The 3.8M reflector quadrants can be assembled in either the standard or inverted positions. The reflector quadrants are numbered 1, 2, 3 and 4. These numbers can be found on the back of each quadrant embossed into the fiberglass. Note that each quadrant has a longer side (major axis) and a shorter side (minor axis). In the standard upright position, the antenna elevation angle range is between 12 and 90 degrees. When viewed from behind in the standard position (feed support at the bottom), quadrant #1 should be in the upper left; #2 is lower left; #3 is lower right and #4 in the upper right position. See Figure 4.

However, to allow a lower profile installation or in areas of high snow accumulation, the reflector can be assembled in the inverted position (feed support at the top). In this position, quadrant #1 would be in the lower right; #2 upper right; #3 in upper left and #4 in lower left position. See Figure 5.

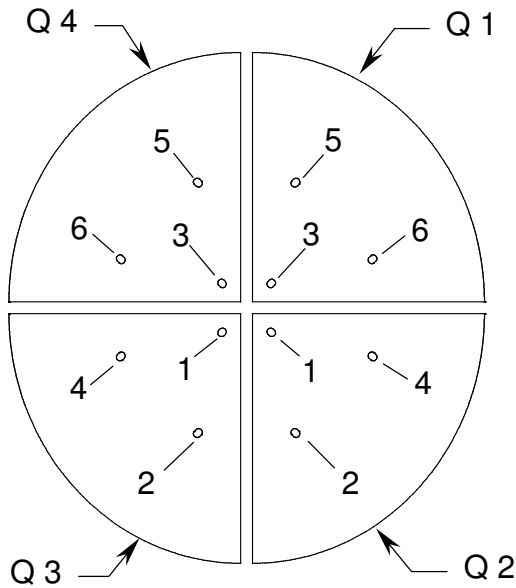
Please note that it is not recommended to invert systems with the Anti-Ice feature. The inverted assembly would prohibit proper heating element location.





3.3 REFLECTOR SUPPORT ASSEMBLY

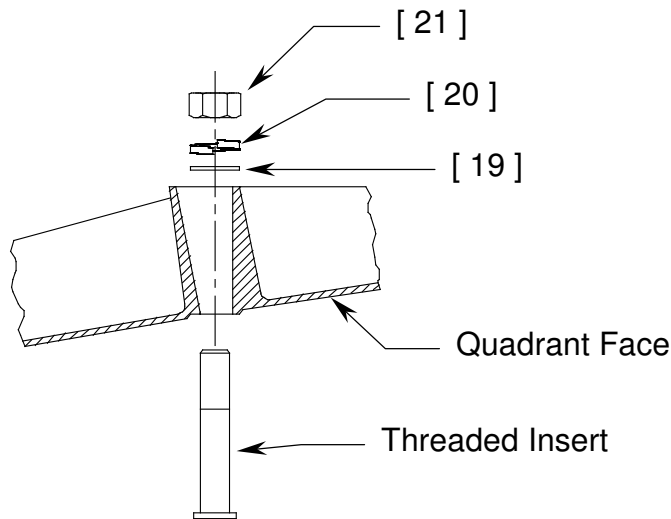
WARNING! The reflector support frame includes a precision alignment feature. Do not drop or drag the frame during the installation process. Do not attempt to adjust the round tube spacers in the frame assembly, as these are factory pre-set. If these spacers are loose or damaged, or there is any obvious damage to the frame, then you must obtain replacement parts for a successful installation.



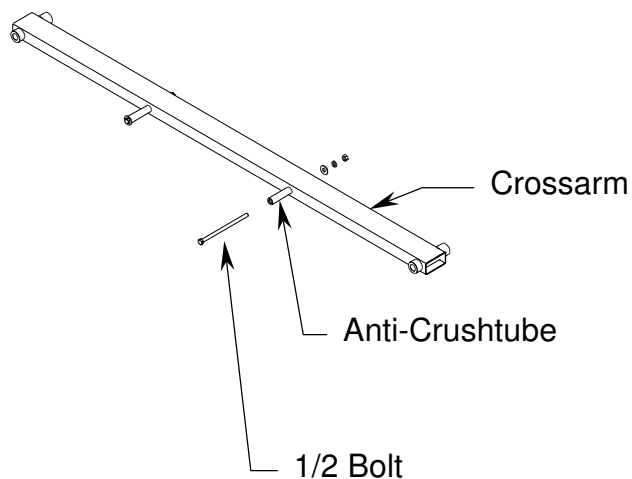
Front view

STEP 1:

- A) Before beginning antenna assembly. Install 12 threaded inserts (items 1-6) thru the face of each reflector quadrant. Note that there are 6 different insert lengths, 2 of each. Each insert must be in the correct position in each quadrant for correct assembly. The top of each insert is stamped with a insert number (1 thru 6). The numbers shown in the illustration correspond with the stamped numbers on the inserts.
- B) Secure inserts with 7/8" hardware (items 19, 20, 21). Snug but do not tighten.

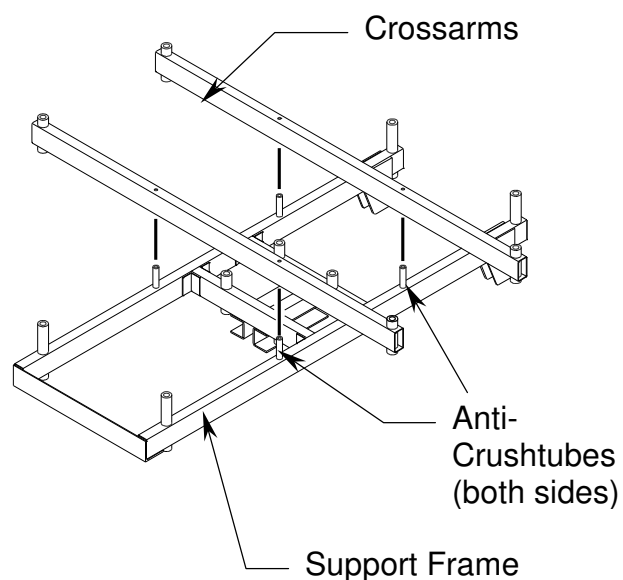


1/2
Hardware



STEP 2:

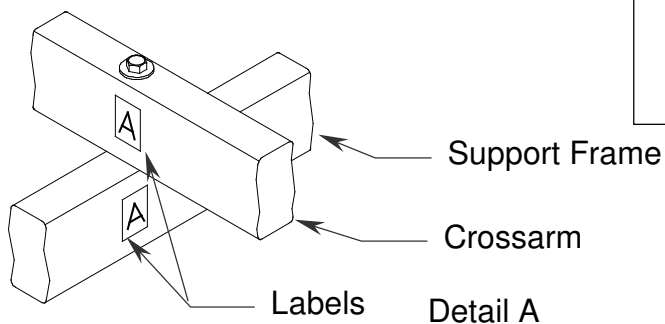
Locate the crossarms (item 12) and remove the 1/2" hardware & anti-crushtubes.



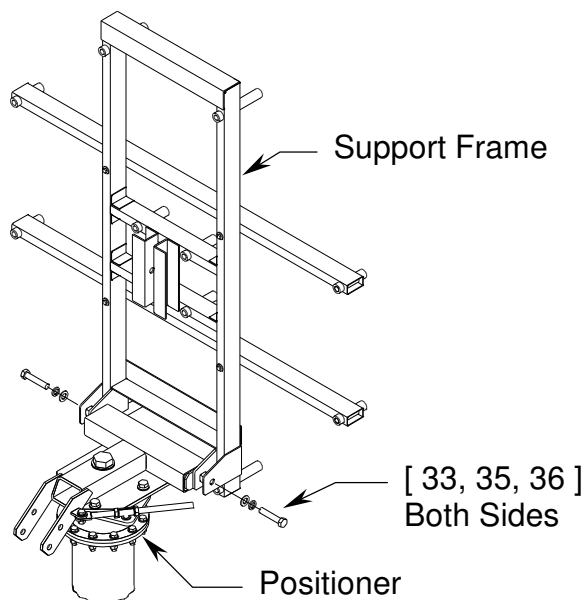
STEP 3:

- A) Lay the support frame (item 13) on a safe flat surface, being careful not to damage the tube spacers.
- B) Insert the anti-crushtubes into the 4 holes on the back of the frame as shown.
- C) Place each crossarm over the anti-crushtubes and secure with the 1/2" hardware removed in step 2. Make sure label A of the support frame is located with label A of the crossarm and repeat procedure with labels B, C, and D. Measure distances between both ends of crossarms to ensure that they are parallel. Tighten securely.

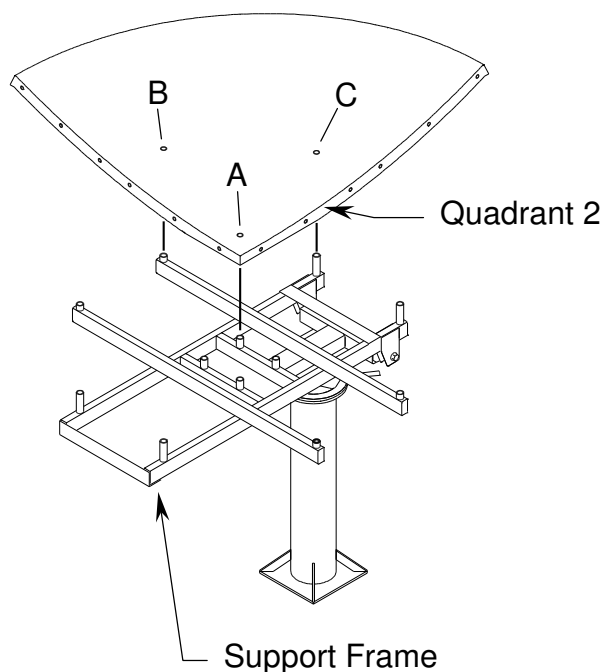
Note: Hardware should be inserted from crossarm side.



STEP 4:



Lift the assembled support frame to the Az/EI positioner and secure with 1" hardware (items 33, 35, 36). Lay frame back to rest on positioner.

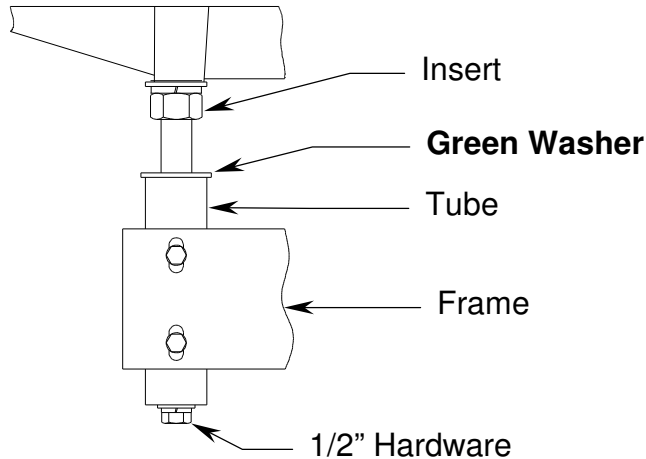
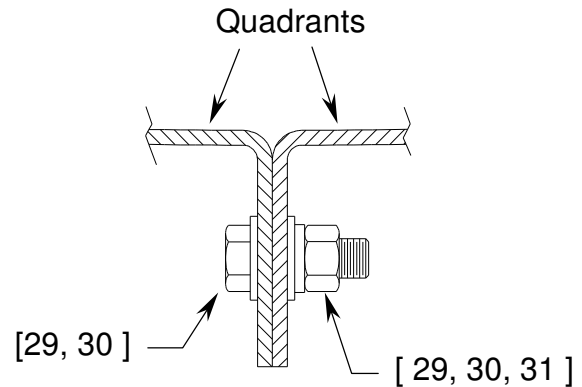
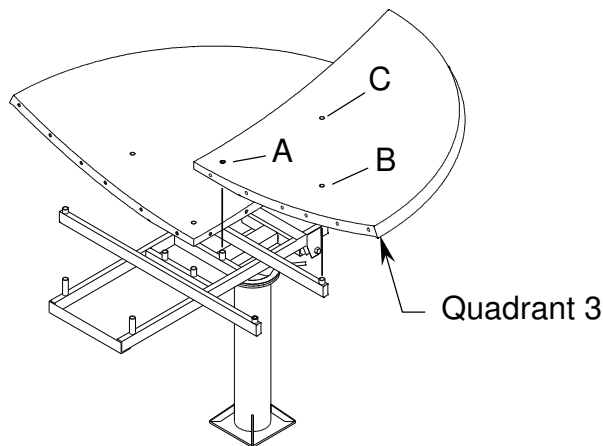


STEP 5:

- A) Position quadrant 2 (quadrant 4 for inverted) to the bottom left side of the frame as shown. **Note** that it may be necessary to loosen the 3 reflector inserts to attain the proper alignment with the 3 tubes in the support frame. this procedure may occur with each of the quadrants.
- B) **After the quadrant is in position, place a 1/2" green washer (item 27) between each insert and tube (see fig 6). repeat this procedure for all 4 quadrants.**
- C) Secure the quadrant to the frame with 1/2" hardware (see fig 6). Note that there are 3 different 1/2" bolt lengths:
 Location A = (items 23, 25, 26)
 Location B = (items 22, 25, 26)
 Location C = (items 24, 25, 26)
 These locations are consistent with all 4 quadrants. Snug hardware only.

WARNING! The reflector support frame includes a precision alignment feature. Do not drop or

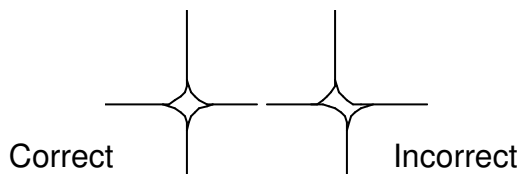
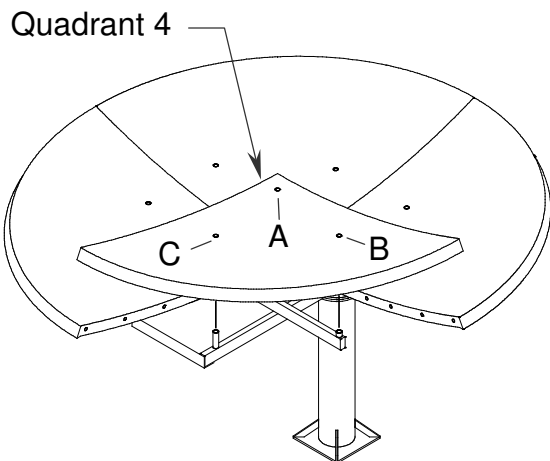
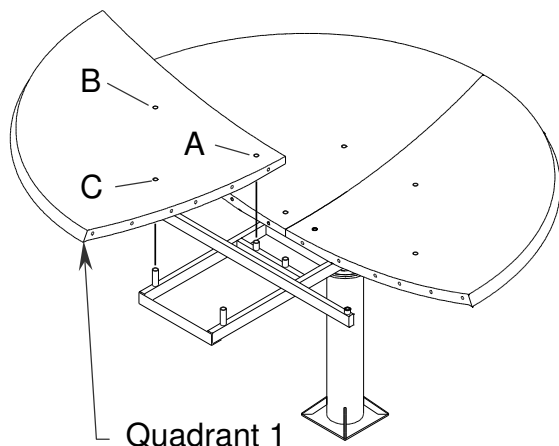
drag the frame during the installation process. Do not attempt to adjust the round tube spacers in the frame assembly, as these are factory pre-set. If these spacers are loose or damaged, or there is any obvious damage to the frame, then you must obtain replacement parts for a successful installation.

Detail ADetail B**STEP 6:**

- A) Position quadrant 3 (quadrant 1 for inverted) to the bottom right side of the frame as shown.
- B) Place GREEN WASHERS as in step 5 and Detail A.**
- C) Secure the quadrant to the frame with 1/2" hardware (see fig 6). Note that there are 3 different 1/2" bolt lengths:
 Location A = (items 23, 25, 26)
 Location B = (items 22, 25, 26)
 Location C = (items 24, 25, 26)
- D) Secure Quad 2 and 3 together with 3/8" hardware (items 28, 29, 30, 31) See Detail B.

STEP 7:

- 16 A) Position quadrant 1 (quadrant 2 for inverted) to the top left side of the frame as shown.
- B) Place Green Washers as in step 5 and Detail A.**



Quadrant Alignment

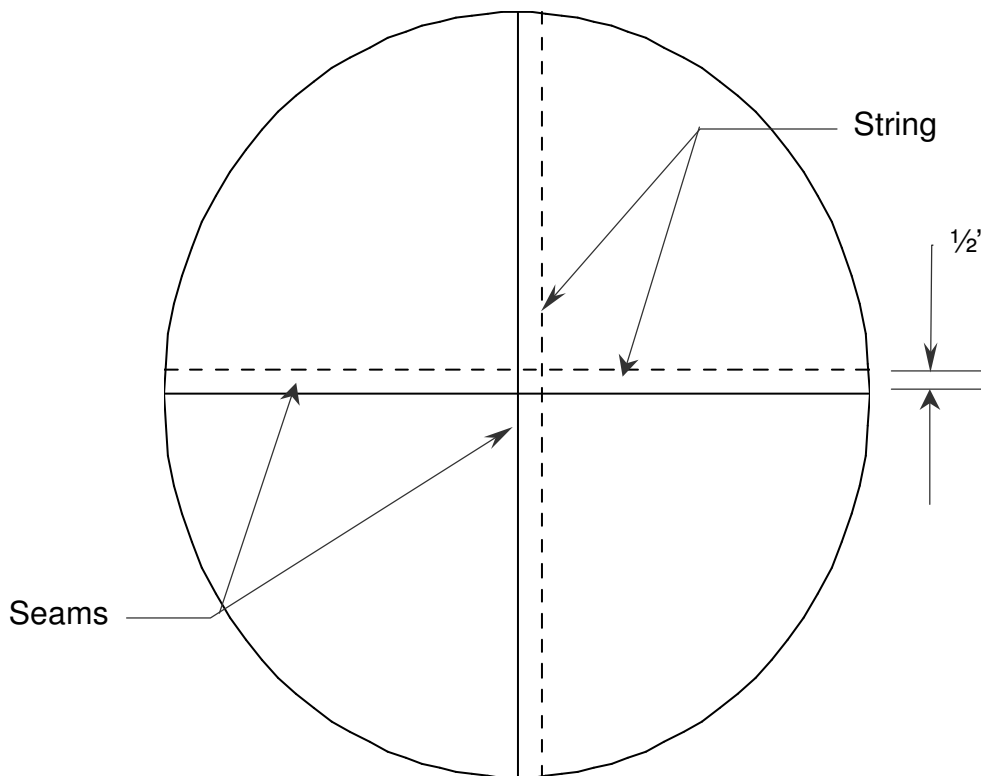
Detail C

OPTIONAL:

STEP 8:

- A) Position quadrant 4 (quadrant 3 for inverted) to the top right side of the frame as shown.
- B) Place Green Washers as in step 5 and Detail A.**
- C) Secure the quadrant to the frame with 1/2" hardware (see fig 6). Note that there are 3 different 1/2" bolt lengths:
Location A = (items 23, 25, 26)
Location B = (items 22, 25, 26)
Location C = (items 24, 25, 26)
- D) Loosen 1/2 " hardware as necessary to adjust and perfectly align quadrants at the center of reflector. (See Detail C)
- E) Place 3/8" hardware in all quadrant seams. (Do not tighten)
- F) Tighten 4 center bolts at location, "A". Secure hardware at locations, "B" and "C" after tightening all remaining hardware.

The accuracy of the reflector assembly can be checked at this point by stretching a small string (monofilament fishing line works well) across the face of the reflector along the major and minor axes. See detail below. (Keep Strings approximately $\frac{1}{2}$ " from seams of the reflector and do not allow strings to fall into the seams! They must go across the rim of the reflector.) The strings should barely touch above the center of the reflector. If they are more than $.125$ ($\frac{1}{8}$ ") apart, or stress each other more than that, repeat steps 8D and 8F.



[35, 36, 37]

STEP 9:

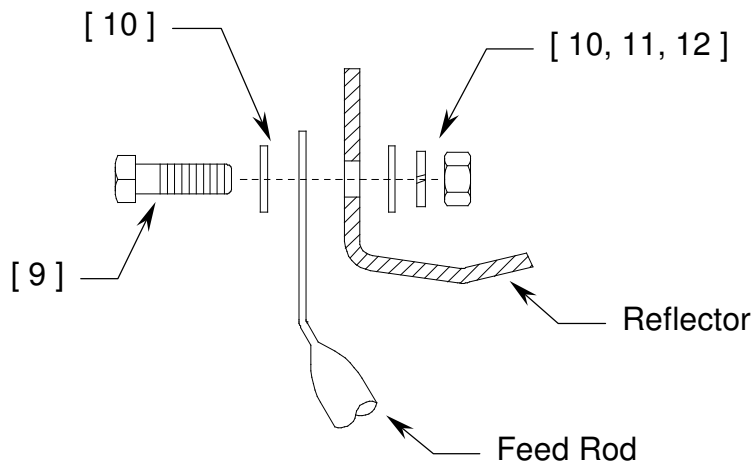
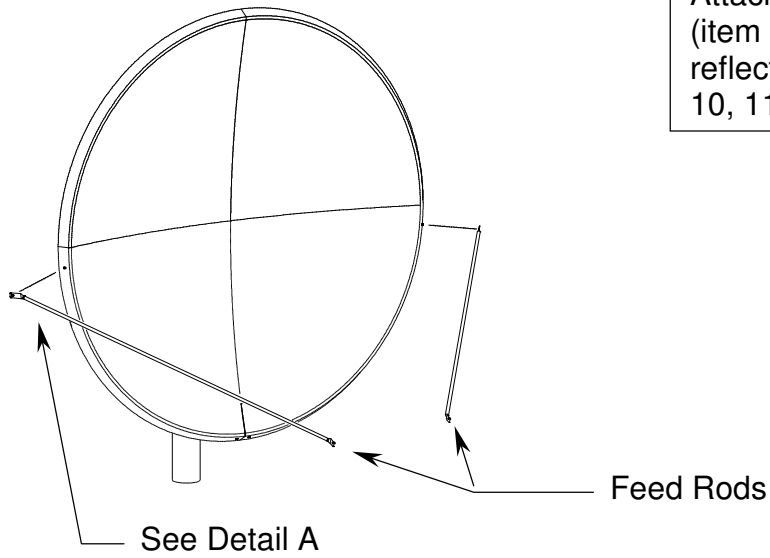
SECTION IV FEED SUPPORT ASSEMBLY

3.8M DUAL OPTIC PART LIST			
ITEM	PART NO.	DESCRIPTION	QTY
1	0176-257	Feed Rods	2
2	0181-192	Feed Support	1
3	0179-510	Sub - Reflector	1
4	0183-574	Feed Assembly	1
5	8033-040	1/2" x 5.00 Hex Bolt	1
6	8201-030	1/2" Flatwasher	2
7	8202-043	1/2" Lockwasher	1
8	8104-007	1/2" Hex Nut	1
9	8032-012	3/8" x 1.50 Hex Bolt	2
10	8201-042	3/8" Flatwasher	6
11	8202-042	3/8" Lockwasher	4
12	8102-007	3/8" Hex Nut	4
13	8031-008	5/16" x 1.00 Hex Bolt	3
14	8030-008	1/4" x 1.00 Hex Bolt	2
15	8201-040	1/4" Flatwasher	4
16	8202-040	1/4" Lockwasher	2
17	8100-007	1/4" Hex Nut	2

4.1 FEED SUPPORT INSTALLATION

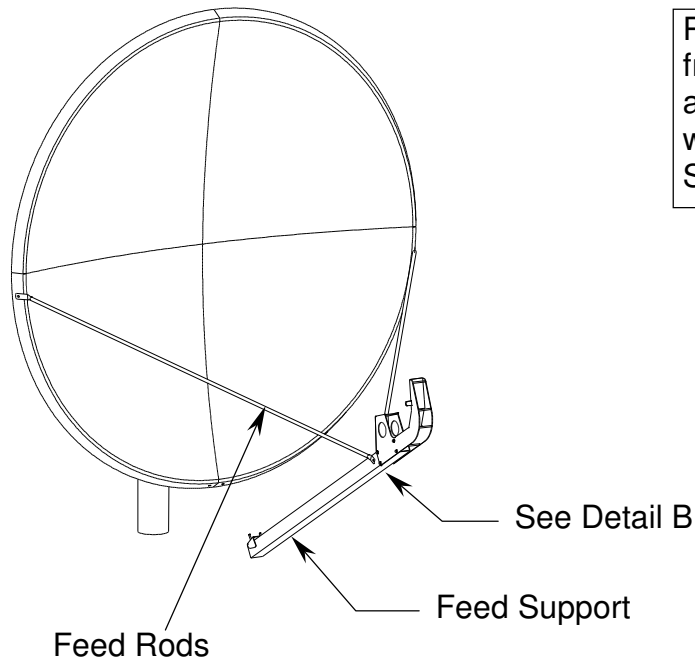
STEP 1:

Attach the long end of each feed rod (item 1) loosely to the sides of the reflector with 3/8" hardware (items 9, 10, 11, 12). See detail A

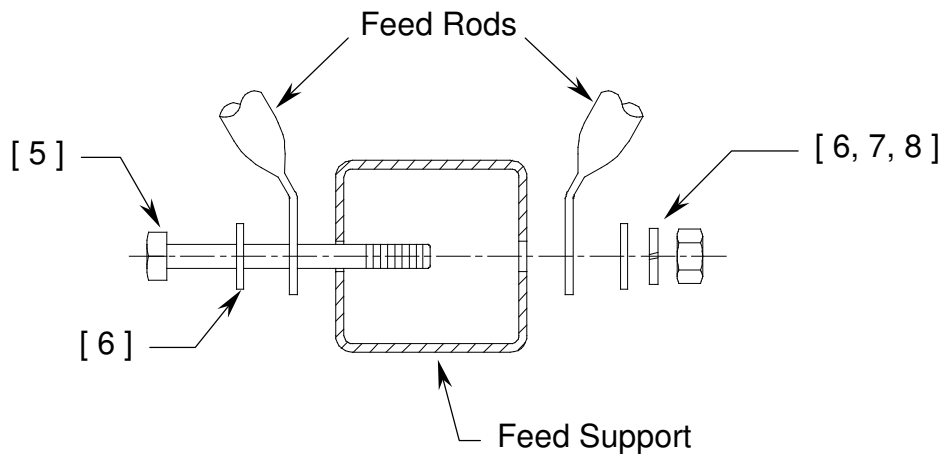


DETAIL A

STEP 2:

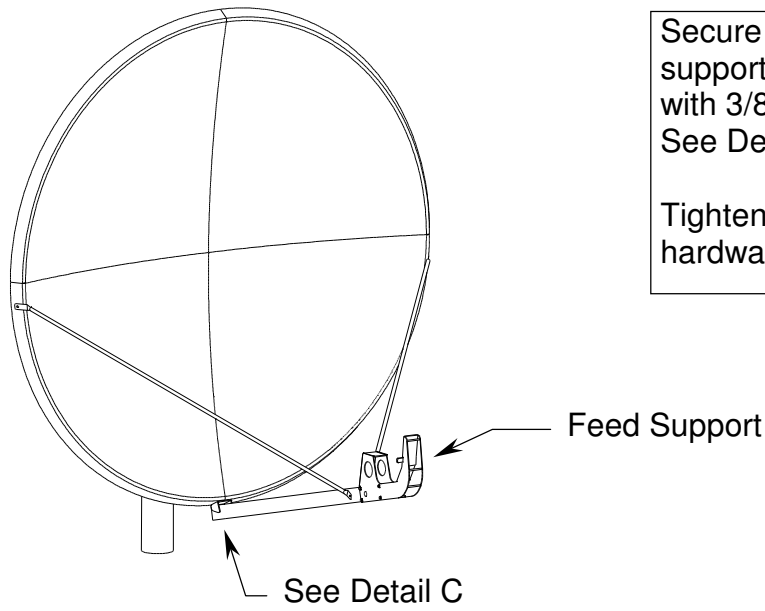


Position the feed support (item 2) in front of the reflector as shown and attach to the two ends of the feed rods with 1/2" hardware (items 5, 6, 7, 8). See Detail B.



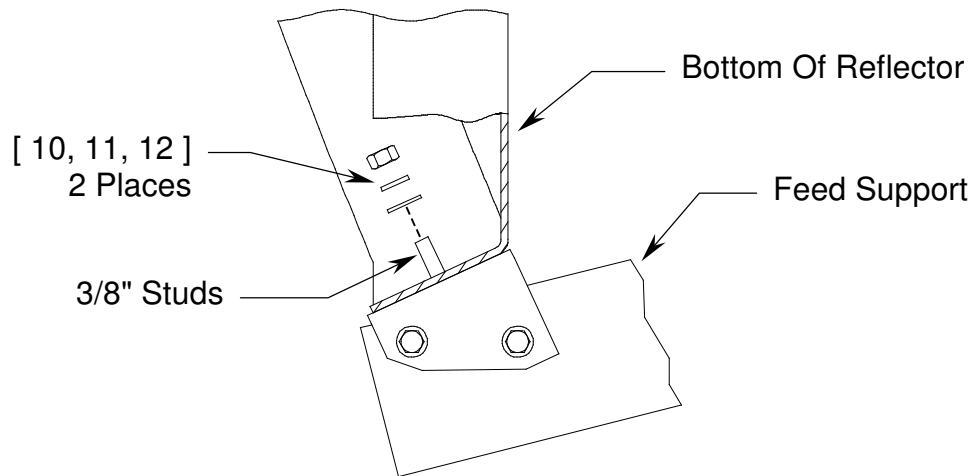
SEE DETAIL B

STEP 3:

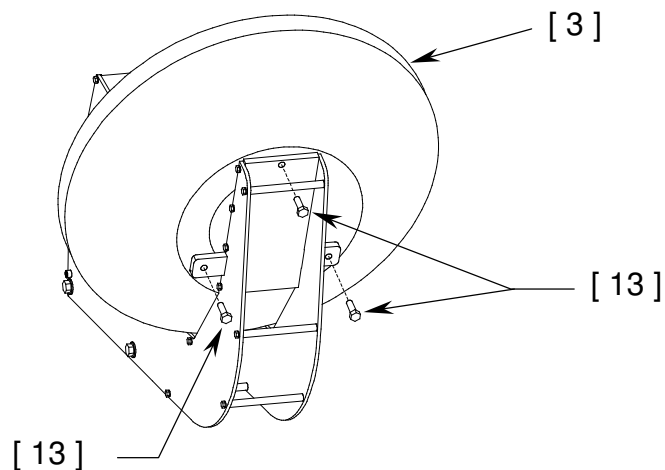


Secure the opposite end of the feed support to the bottom of the reflector with 3/8" hardware (items 10, 11, 12). See Detail C.

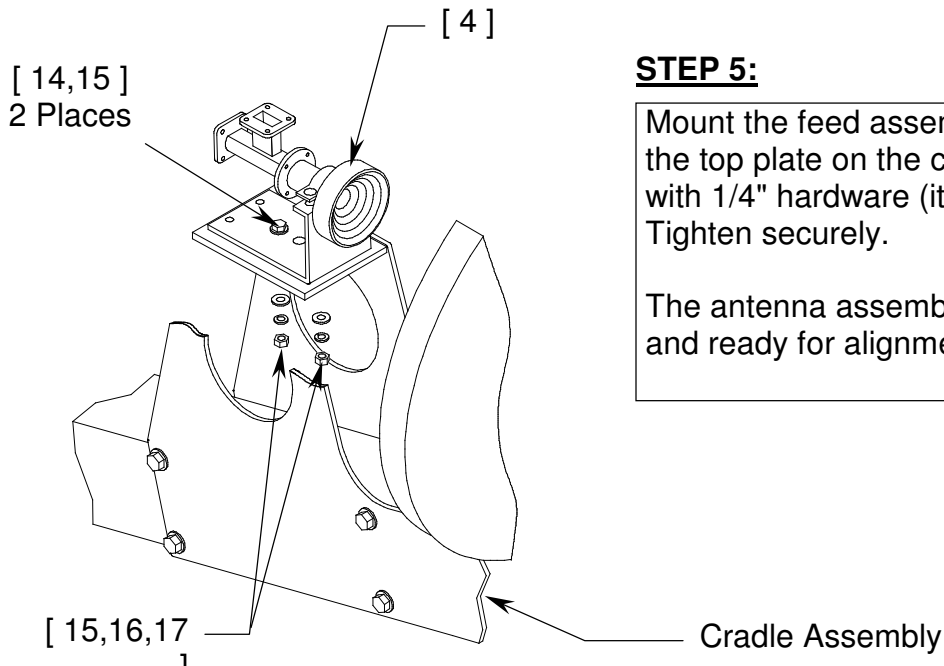
Tighten all feed support and feeds rod hardware at this time.



STEP 4:



Secure the Sub-Reflector (item 3)to the cradle assembly on the end of the feed support with 5/16" hardware (item 13). Tighten securely. Note: Sub-reflector is pre-assembled for alignment. In reinstalling the sub-reflector , do not remove any spacers which may change the alignment.



STEP 5:

Mount the feed assembly (item 4) to the top plate on the cradle assembly with 1/4" hardware (items14, 15, 16, 17) Tighten securely.
The antenna assembly is now complete and ready for alignment to satellite.

5.0 **ALIGNMENT TO SATELLITE**

Prodelin recommends that the 3.8 meter Az/EI mount be positioned to the Satellite orbital arc by a trained or experienced installer. The instructions in Section 5.1 are intended as an overview of the alignment procedure.

5.1 **INITIAL ALIGNMENT**

The 3.8 meter offset reflector contains a 22.62° elevation offset look angle. Therefore, when the reflector aperture is perpendicular to the ground, the antenna is actually looking 22.62° in elevation.

1. Raise the antenna by turning the 2" nuts on the elevation rod assembly.
2. After the correct elevation angle is set, rotate the antenna in azimuth by loosening the 2" nut on top of the positioner and removing the 1" hardware (4 places) in the positioner plate, refer to figure 8.
3. At this time rotate the antenna in azimuth by turning the 1" nuts located at the azimuth adjustment tube. Rotate azimuth until a signal is reached.
4. Peak the antenna by fine adjustments made in both the elevation and the azimuth.
5. Adjust polarization by rotating the feed assembly in its mounting bracket.
6. Re-install the 1" hardware in the Az/EI positioner (from step # 2) and tighten all adjustment hardware securely.

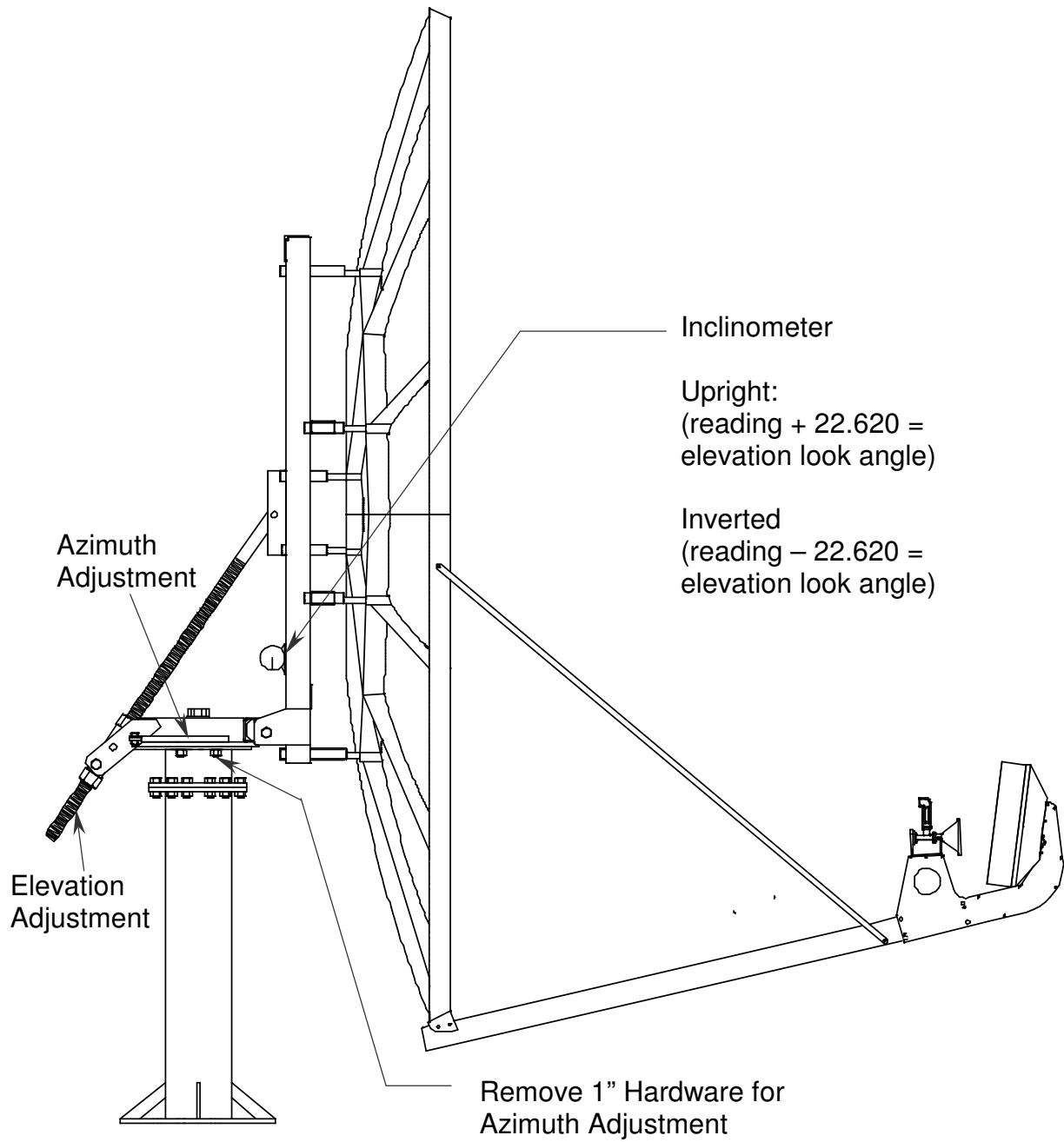


Figure 8

SECTION VI MAINTENANCE

6.0 MAINTENANCE OVERVIEW

After installation, the antenna requires only periodic inspection. It is anticipated that maintenance, if required will be minimal and easily handled by a local or in house maintenance staff. The materials used in the construction of this Earth Station Antenna virtually eliminate any maintenance repairs.

6.1 PERIODIC INSPECTION

It is suggested that a periodic inspection be performed at least every six months.

NOTE: **After any very severe weather condition, inspection of the antenna should be performed to determine if foreign objects have caused damage or if survival specifications have been exceeded.**

This inspection should include the following:

- 1: Check all bolting locations - all bolts should be tight.
- 2: Check all structural members - repair or replace if damaged.
- 3: Check the foundation anchor bolts - they must be secure and have no failure signs in the foundation.
- 4: Check for corrosion - on the reflector structure and the mount.

6.2 REFLECTOR

Prodelin's reflector does not require any maintenance. The composite construction of the reflector is virtually impervious to any damages that could be caused by weather or other atmospheric conditions.

It is only necessary to inspect for any physical damage caused by vandalism or very severe weather conditions.

Should any damage be detected to a portion of the reflector, contact the Customer Service Department at Prodelin for recommendation involving reflector repair.

6.3 MOUNT AND REFLECTOR SUPPORT STRUCTURE

The mount and reflector support structure supplied with this antenna is of steel construction and has a galvanized finish with zinc w/ultraguard finish for hardware.

If inspection shows any sign of structural failure, the mount members that are damaged should be repaired or replaced.

Corrosion: Any corrosion on steel members may be repaired with a cold, zinc rich galvanizing paint.

6.4 FEED AND FEED SUPPORT

The feed support tube and feed rods should be inspected to insure that all hardware is secure. The feed and radio mounting bolts should be tight.

The feed horn window should be inspected to insure that it is intact so that no moisture can collect inside the feed horn. Replace if damaged.

GENERAL DYNAMICS
SATCOM Technologies

4096-228
REVISION B
May 13, 2009

ASSEMBLY MANUAL

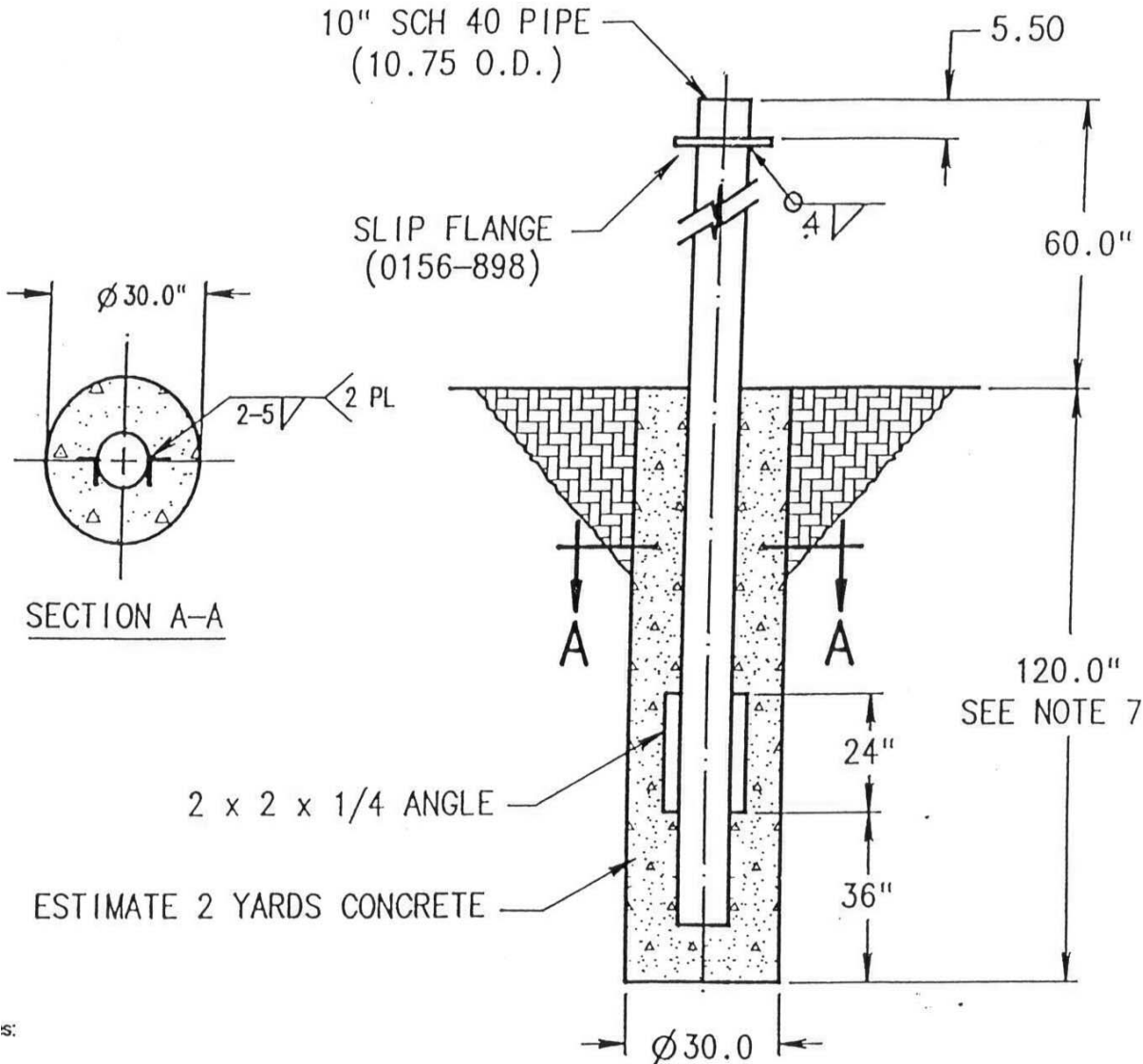
3.8 Meter
In-Ground Mast Pipe

General Dynamics SATCOM Technologies
1500 PRODELIN DRIVE
NEWTON, NC 28658

3.8 METER IN-GROUND MAST PIPE

B	REVISED LOGO, NAME, AND PICTURES	5/13/09	RAH
A	REVISED NEW ADDRESS	7/22/02	CLT
-	ORIGINAL RELEASE	1/19/93	-
REV.	DESCRIPTION	DATE	APPROVED

IN - GROUND MAST FOUNDATION, 3.8 METER ANTENNA SYSTEM



5:

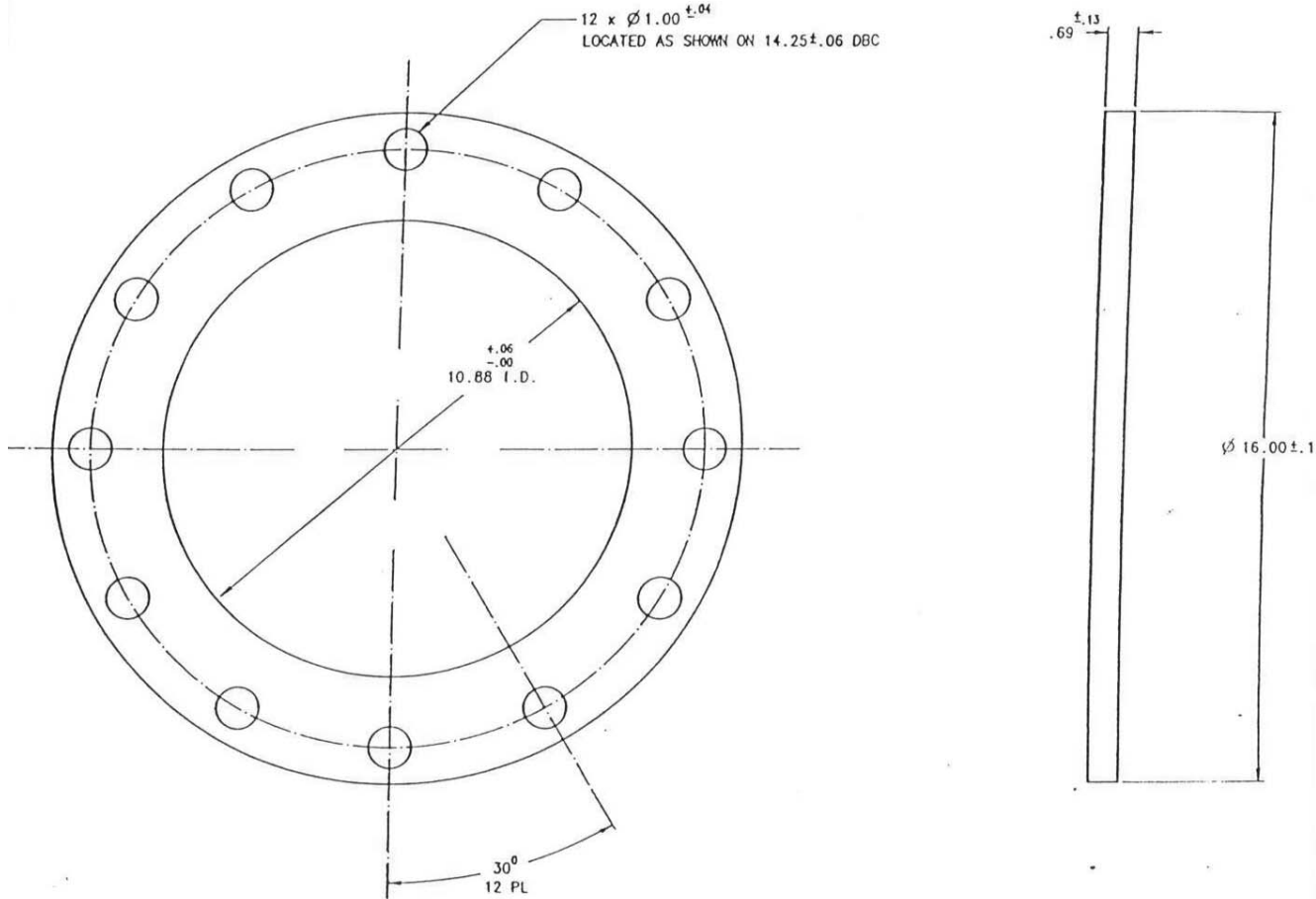
Notes.

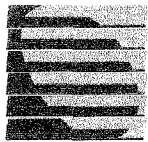
1. 2 x 2 x 1/4 HRS ANGLE & 10" SCHEDULE 40 PIPE SHOULD CONFORM WITH ASTM A36 STRUCTURAL STEEL.
2. ALL CONCRETE SHOULD CONFORM TO BUILDING CODE STANDARDS AND HAVE A MINIMUM COMPRESSIVE STRENGTH OF 3000 PSI AT 28 DAYS. (PER ACI-318-77)
3. SOIL BEARING CAPACITY SHOULD BE NO LESS THAN 2000 PSF.
4. CONCRETE SHOULD BE POURED AGAINST UNDISTURBED SOIL.
5. ALL CONCRETE 24 HOUR SET TIME BEFORE INSTALLATION OF ANTENNA.
6. THE ANTENNA SHOULD BE PROPERLY GROUNDED TO MEET APPLICABLE LOCAL CODES
7. MINIMUM DEPTH AS SHOWN OR EXTENDED TO LOCAL FROST LINE.

(GENERAL DYNAMICSCORPORATION DOES NT REPRESENT OR WARRANT THAT ANY PARTICULAR DESIGN OR SIZE OF FOUNDATION IS APPROPRIATE FOR ANY LOCALITY OR

EARTH STATION INSTALLATION.)

Base Plate - 0156-898





PRODELIN®

GENERAL DYNAMICS

4096-564

January 24, 2002

Revision B

ASSEMBLY MANUAL

**3.8M DUAL OPTIC FEED SUPPORT
ASSEMBLY**

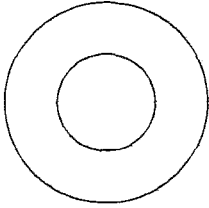
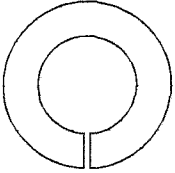
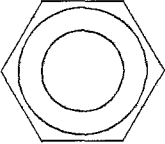
**Prodelin Corporation
1500 Prodelin Drive
Newton NC 28658 USA
828-464-4141**

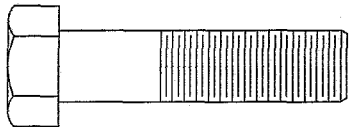
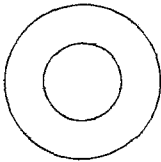
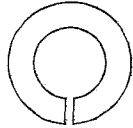
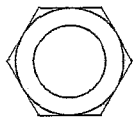
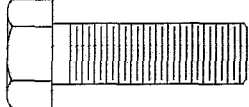
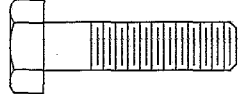
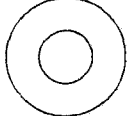
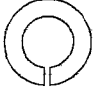
3.8M DUAL OPTIC FEED SUPPORT ASSEMBLY

B	Revised feed bracket figure	4/28/05	<i>CLT</i>
A	Revised Address	1/24/02	RAH
-	ORIGINAL RELEASE	05/16/98	PGW
REV.	DESCRIPTION	DATE	APPROVED

GENERAL INFORMATION

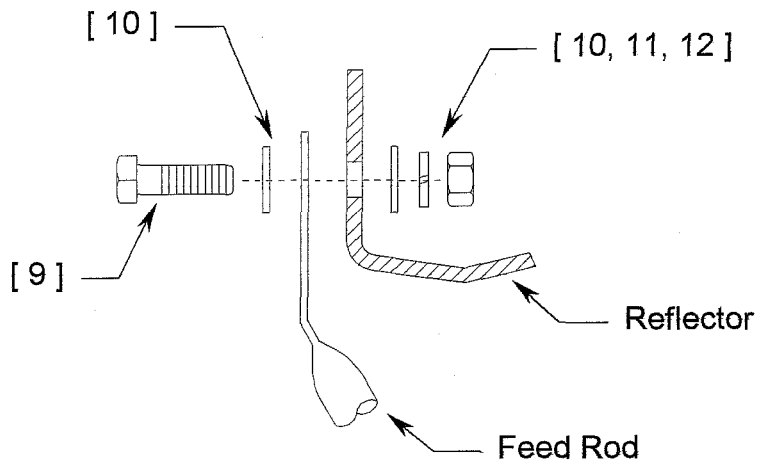
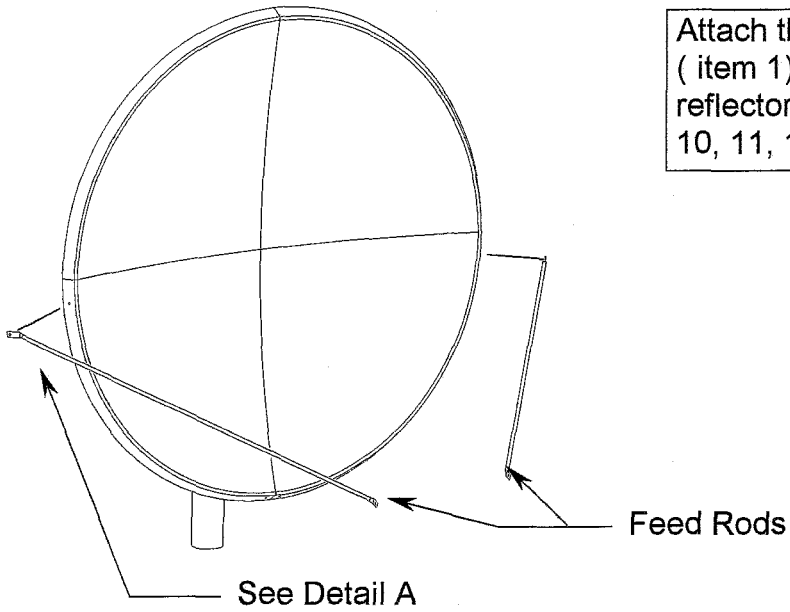
This manual describes the steps required to attach the dual optic feed system to the standard Prodelin 3.8M antenna system. Follow the steps outlined in the 3.8M antenna system installation manual up to the completion of the feed support assembly. Refer to the following part list and steps to complete the installation of the dual optic feed system.

3.8M DUAL OPTIC PART LIST			
ITEM	PART NO.	DESCRIPTION	QTY
1	0176-257	Feed Rods	2
2	0181-192	Feed Support	1
3	0179-510	Sub - Reflector	1
4	0183-574	Feed Assembly	1
5	8033-040	1/2" x 5.00 Hex Bolt	1
6	8201-030	1/2" Flatwasher	2
			
7	8202-043	1/2" Lockwasher	1
			
8	8104-007	1/2" Hex Nut	1
			

PART LIST- CONTINUED			
ITEM	PART NO.	DESCRIPTION	QTY
9	8032-012	3/8" x 1.50 Hex Bolt 	2
10	8201-042	3/8" Flatwasher 	6
11	8202-042	3/8" Lockwasher 	4
12	8102-007	3/8" Hex Nut 	4
13	8031-008	5/16" x 1.00 Hex Bolt 	3
14	8030-008	1/4" x 0.50 Hex Bolt 	1
15	8201-040	1/4" Flatwasher 	1
16	8202-040	1/4" Lockwasher 	1

STEP 1:

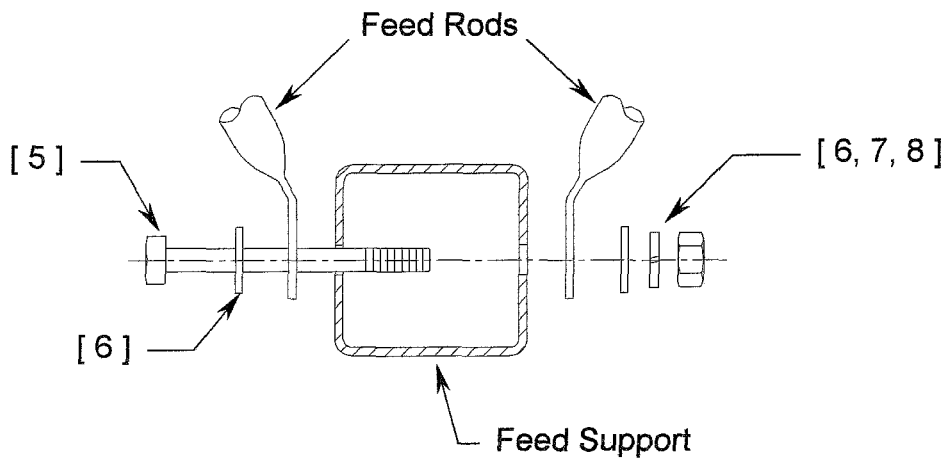
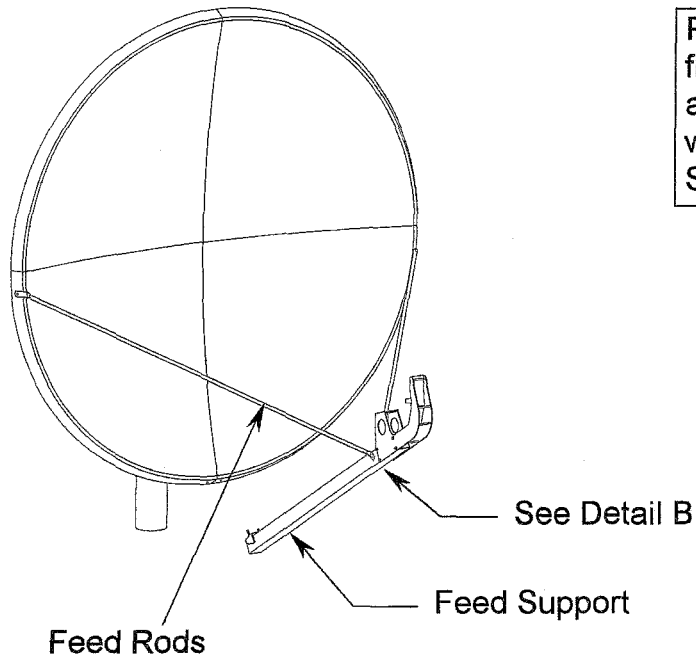
Attach the long end of each feed rod (item 1) loosely to the sides of the reflector with 3/8" hardware (items 9, 10, 11, 12). See Detail A



DETAIL A

STEP 2:

Position the feed support (item 2) in front of the reflector as shown and attach to the two ends of the feed rods with 1/2" hardware (items 5, 6, 7, 8). See Detail B.

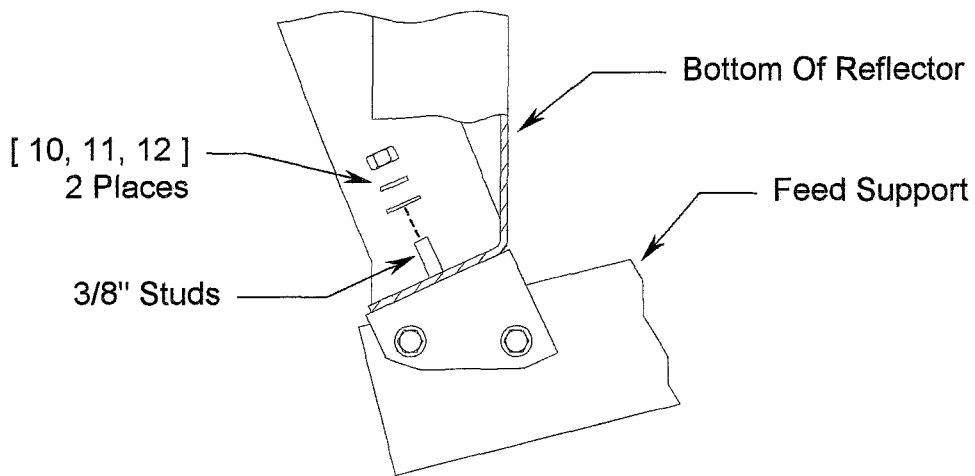
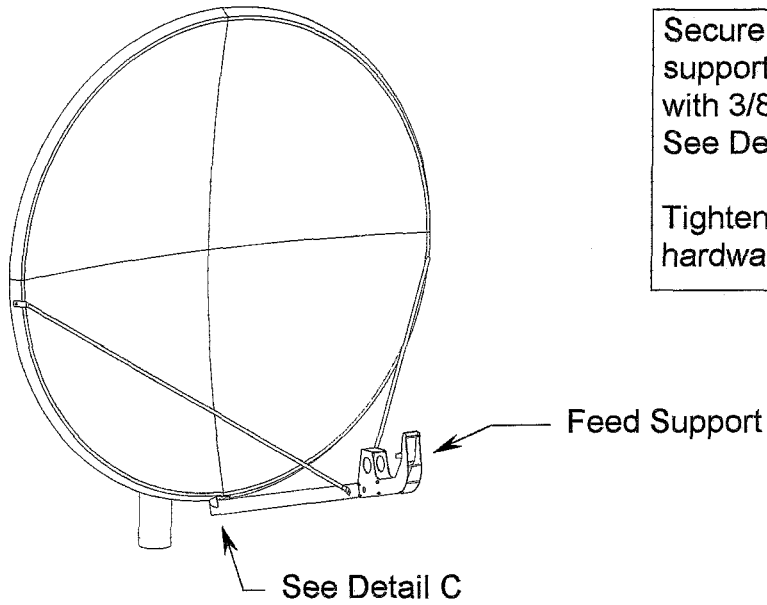


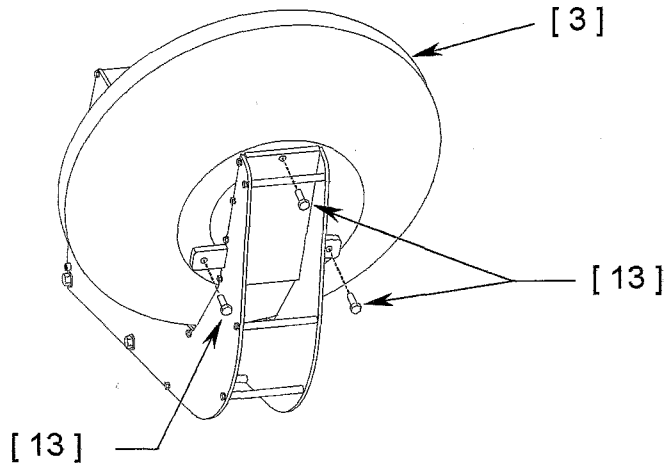
SEE DETAIL B

STEP 3:

Secure the opposite end of the feed support to the bottom of the reflector with 3/8" hardware (items 10, 11, 12). See Detail C.

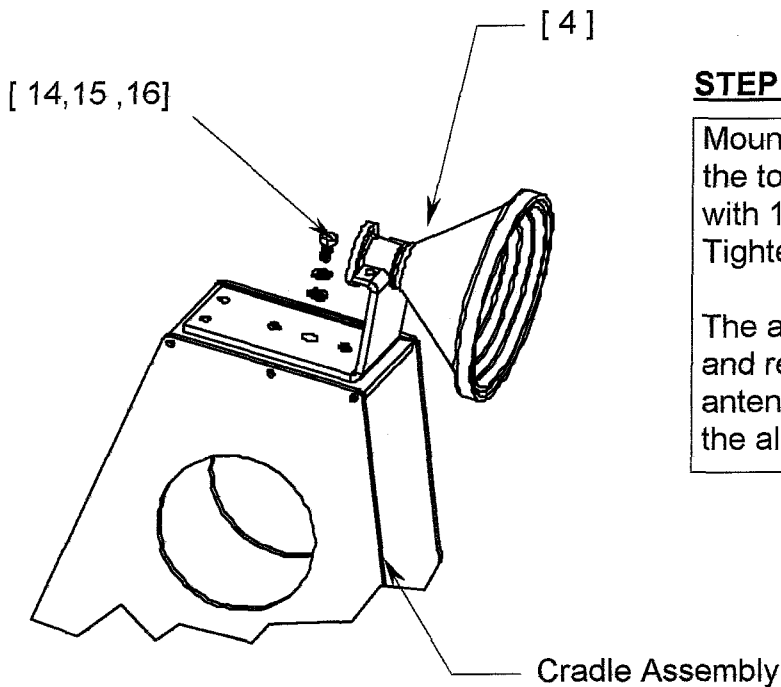
Tighten all feed support and feeds rod hardware at this time.





STEP 4:

Secure the Sub-Reflector (item 3)to the cradle assembly on the end of the feed support with 5/16" hardware (item 13). Tighten securely.



STEP 5:

Mount the feed assembly (item 4) to the top plate on the cradle assembly with 1/4" hardware (items14, 15, 16) Tighten securely.

The antenna assembly is now complete and ready for alignment. Refer to the antenna system installation manual for the alignment guidelines.