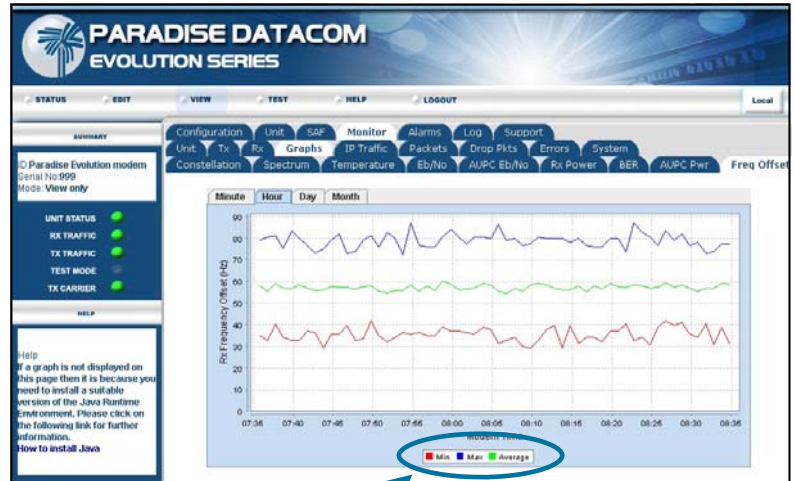


All Evolution Series Modems feature free performance monitors presented via the in-built web server. The following are displayed in graphical format within a Web Browser:

- ▶ *Eb/No vs time*
- ▶ *Receive Signal Power vs time*
- ▶ *BER vs time*
- ▶ *Real time Receive Spectrum Analyser*
- ▶ *Real time Receive Constellation Monitor*
- ▶ *Receive IF Offset frequency vs time*
- ▶ *Modem Internal Temperature vs time*
- ▶ *AUPC Eb/No (Distant End) vs time*
- ▶ *AUPC Power (Delta Power) vs time*
- ▶ *Numerous IP Statistics vs time*
- ▶ *Modem CPU Usage & Memory Usage*

Example of
Receive IF Frequency Offset display
via Web Browser



■ Min ■ Max ■ Average

**Minimum, Maximum and
Average values displayed**

Performance data is continually collected in the Modem regardless of whether the graphing tools are active or not. Up to 1 month of history.

ALL EVOLUTION MODEMS INCLUDE FREE PERFORMANCE MONITORING TOOLS

- ▶ Full Status Monitoring of Alarms and Warnings
- ▶ Traffic Log records all changes of status with time and date stamp
- ▶ Time based performance data is graphed with a user-selectable timebase up to 1 month
- ▶ Graphs show minimum, maximum and average values for most parameters
- ▶ Can print or save all graphs with just a mouse click
- ▶ Field proven capabilities - offers full visibility of link performance
- ▶ IP Statistics include Transmit and Receive performance data, categorised by IP port (Traffic, M&C and Satellite Traffic) as follows:

<i>IP Traffic</i>	<i>IP Packets</i>
<i>Dropped Packets</i>	<i>Errored Packets</i>
- ▶ All graphical content (CSV format) can be emailed **by the Modem** to chosen recipients, either on alarm detection, or on a regular schedule - this is easily converted to an Excel graph with just 4 mouse clicks
- ▶ Performance tools can be used to monitor remote sites from another location **without sending an Engineer to site and with no additional test equipment**

The Web User Interface (WUI) is accessed via a Web Browser such as Internet Explorer V.6 or above, Firefox or Netscape V7 or above. Enter the Modem IP Address in the address bar of the Browser and log on when prompted. The Modem supports two levels of access:

Username: **user** *Allows monitor-only access*
 default password: **paradise**

Username: **admin** *Allows full monitor & control access*
 default password: **paradise**

We recommend that the password is changed for security reasons. Only Administrators (**admin** login) have authority to change passwords.

Buttons and tabs are logically organised in categories, using the same layout as the Modem front panel menus. Simple point and click selection of parameters.

Modem alarm status can be viewed by selecting **STATUS → Traffic**

Modem link status can be viewed by selecting **STATUS → Demodulator**

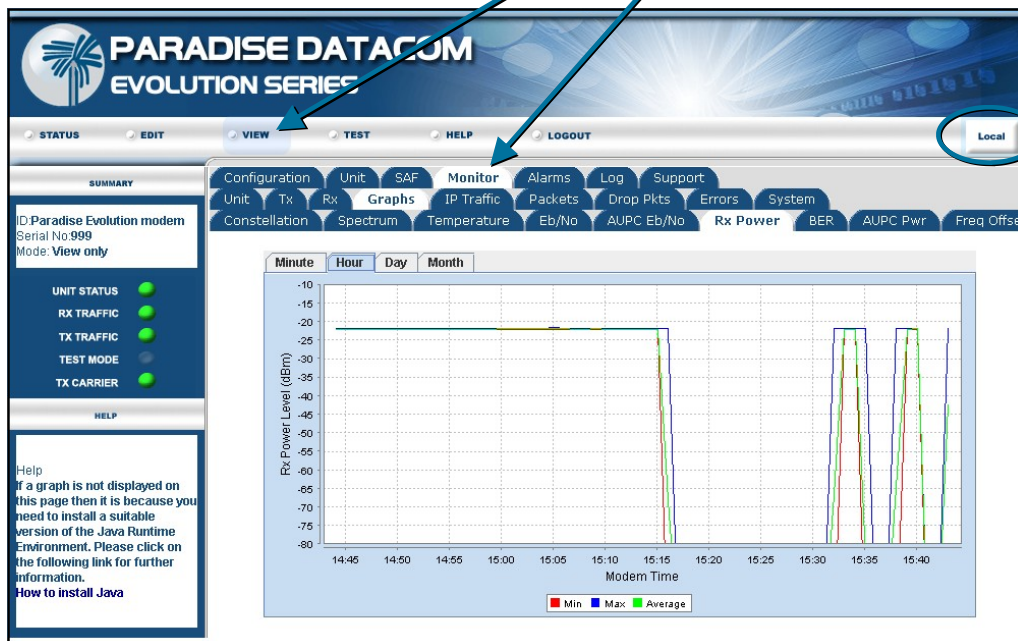
Link status information includes:

Rx Eb/No
Final BER

Rx power level
Rx buffer fill status

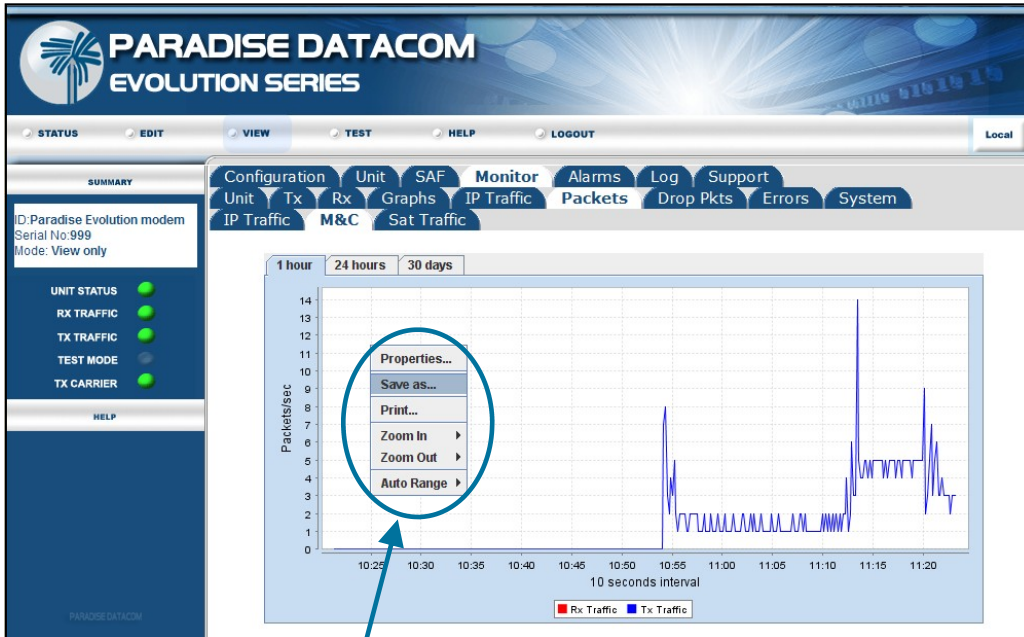
Rx frequency offset
Buffer slips

Performance graphs are found under **VIEW → Monitor**



In a point to point link, this button selects M&C content from the far-end Modem. Button displays **Local** for the Local connection and **Remote** for Remote (far) End connection via the ESC channel (if the ESC is used).

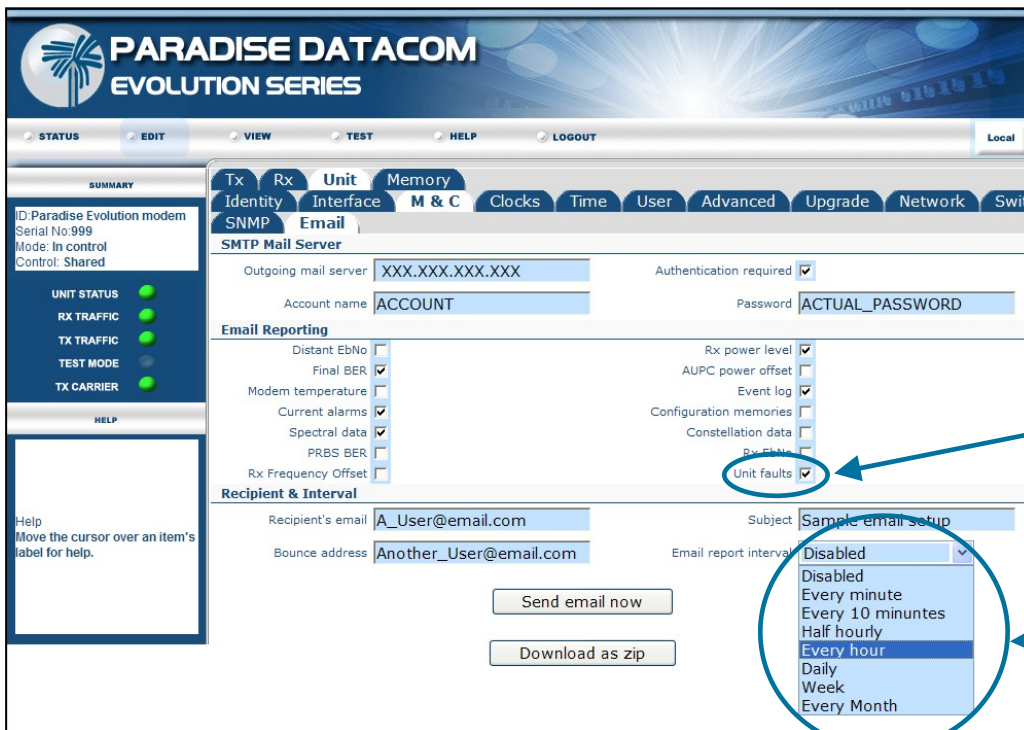
Example of the Receive Power Monitor via a Web Browser



Example of the IP Packet Monitor via a Web Browser

Right-clicking on any graph displays the menu for saving, printing, zooming or autoranging the graph display.

The Modem may be configured to email particular information on a regular schedule, or to email Unit Faults should alarms occur. To configure the email facility, log on as Administrator and select **EDIT → Unit → M&C → Email** then complete the form. Graph data is sent in CSV format.



Unit faults are emailed immediately if this box is ticked

Select the required email reporting interval